

Product datasheet for **TA330221**

Esrrg Rabbit Polyclonal Antibody

Product data:

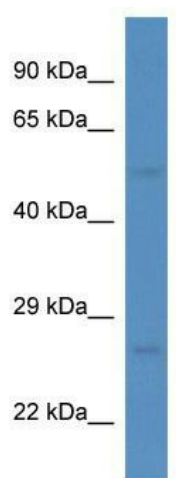
Product Type:	Primary Antibodies
Applications:	WB
Recommended Dilution:	WB
Reactivity:	Rat
Host:	Rabbit
Isotype:	IgG
Clonality:	Polyclonal
Immunogen:	The immunogen for anti-Esrrg antibody: synthetic peptide corresponding to a region of Rat. Synthetic peptide located within the following region: RIDAENSPYLNPQLVQPAKKPYNKIVSHLLVAEPEKIYAMPDPTVPDSDI
Formulation:	Liquid. Purified antibody supplied in 1x PBS buffer with 0.09% (w/v) sodium azide and 2% sucrose. <i>Note that this product is shipped as lyophilized powder to China customers.</i>
Conjugation:	Unconjugated
Storage:	Store at -20°C as received.
Stability:	Stable for 12 months from date of receipt.
Predicted Protein Size:	51 kDa
Gene Name:	estrogen-related receptor gamma
Database Link:	NP_976081 Entrez Gene 360896 Rat P62510
Background:	Esrrg is an orphan receptor that acts as transcription activator in the absence of bound ligand. It binds specifically to an estrogen response element and activates reporter genes controlled by estrogen response elements.
Synonyms:	DKFZp781L1617; ERR3; ERRG2; ERRgamma; FLJ16023; KIAA0832; NR3B3; OTTHUMP00000035092; OTTHUMP00000035095; OTTHUMP00000035115; OTTHUMP00000035116; OTTHUMP00000035126



[View online »](#)

Note: Immunogen sequence homology: Dog: 100%; Pig: 100%; Rat: 100%; Horse: 100%; Human: 100%; Mouse: 100%; Bovine: 100%; Rabbit: 100%; Zebrafish: 100%; Guinea pig: 100%

Product images:



WB Suggested Anti-Esrrg Antibody; Titration: 1.0 ug/ml; Positive Control: Rat Liver