

## Product datasheet for **TA330220**

### Estrogen Related Receptor beta (ESRRB) Rabbit Polyclonal Antibody

#### Product data:

Product Type:	Primary Antibodies
Applications:	WB
Recommended Dilution:	WB
Reactivity:	Human, Mouse
Host:	Rabbit
Isotype:	IgG
Clonality:	Polyclonal
Immunogen:	The immunogen for anti-ESRRB antibody: synthetic peptide directed towards the N terminal of human ESRRB. Synthetic peptide located within the following region: SSDASGGFGLALGTHANGLDSPPMFAGAGLGGLPCRKSYEDCASGIMEDS
Formulation:	Liquid. Purified antibody supplied in 1x PBS buffer with 0.09% (w/v) sodium azide and 2% sucrose. <i>Note that this product is shipped as lyophilized powder to China customers.</i>
Conjugation:	Unconjugated
Storage:	Store at -20°C as received.
Stability:	Stable for 12 months from date of receipt.
Predicted Protein Size:	55 kDa
Gene Name:	estrogen related receptor beta
Database Link:	<a href="#">NP_004443</a> <a href="#">Entrez Gene 26380 Mouse</a> <a href="#">Entrez Gene 2103 Human</a> <a href="#">O95718</a>
Background:	ESRRB encodes a protein with similarity to the estrogen receptor. Its function is unknown; however, a similar protein in mouse plays an essential role in placental development. This gene encodes a protein with similarity to the estrogen receptor. Its function is unknown; however, a similar protein in mouse plays an essential role in placental development. Sequence Note: The sequence AF094517.1 is from a chimeric clone. Only the ESRRB sequence was propagated into this RefSeq record. Publication Note: This RefSeq record includes a subset of the publications that are available for this gene. Please see the Entrez Gene record to access additional publications.



[View online »](#)

**Synonyms:** DFNB35; ERR2; ERRb; ESRL2; NR3B2

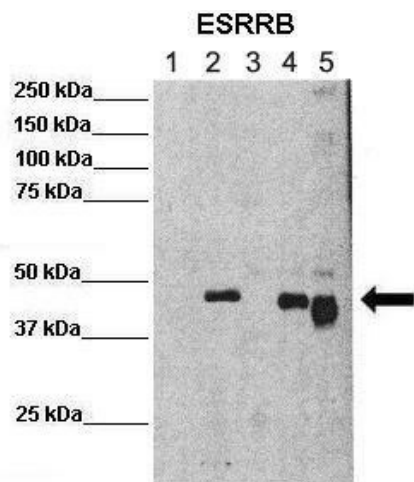
**Note:** Immunogen sequence homology: Dog: 100%; Pig: 100%; Rat: 100%; Horse: 100%; Human: 100%; Bovine: 100%; Guinea pig: 100%; Mouse: 93%; Rabbit: 93%

**Protein Families:** Druggable Genome, Nuclear Hormone Receptor, Transcription Factors

### Product images:



WB Suggested Anti-ESRRB Antibody Titration: 0.2-1 ug/ml; ELISA Titer: 1:312500; Positive Control: MCF7 cell lysate



Lanes : Lane 1: 25ug mouse ES cells Lane 2: 25ug mouse ES cells overexpressing FLAG EsrrB (mouse) Lane 3: 25ug chromatin fraction CV1 cells Lane 4: 25ug chromatin fraction CV1 cells overexpressing FLAG EsrrB (mouse) Lane 5: 25ug chromatin fraction CV1 cells o