

Product datasheet for **TA330219**

Esrra Rabbit Polyclonal Antibody

Product data:

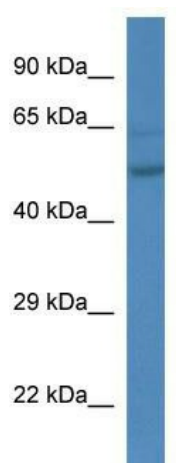
Product Type:	Primary Antibodies
Applications:	WB
Recommended Dilution:	WB
Reactivity:	Mouse
Host:	Rabbit
Isotype:	IgG
Clonality:	Polyclonal
Immunogen:	The immunogen for anti-Esrra antibody: synthetic peptide corresponding to a region of Mouse. Synthetic peptide located within the following region: AGRAGPGGGAERRRAGRLLLLLPLLRQTAGKVLAHFYGVKLEGKVPMHKL
Formulation:	Liquid. Purified antibody supplied in 1x PBS buffer with 0.09% (w/v) sodium azide and 2% sucrose. <i>Note that this product is shipped as lyophilized powder to China customers.</i>
Conjugation:	Unconjugated
Storage:	Store at -20°C as received.
Stability:	Stable for 12 months from date of receipt.
Predicted Protein Size:	45 kDa
Gene Name:	estrogen related receptor, alpha
Database Link:	NP_031979 Entrez Gene 26379 Mouse O08580
Background:	Esrra binds to an ERR-alpha response element (ERRE) containing a single consensus half-site, 5'-TNAAGGTCA-3'. It can bind to the medium-chain acyl coenzyme A dehydrogenase (MCAD) response element NRRE-1 and may act as an important regulator of MCAD promoter. It binds to the C1 region of the lactoferrin gene promoter. It requires dimerization and the coactivator, PGC-1A, for full activity. The ERRalpha/PGC1alpha complex is a regulator of energy metabolism.
Synonyms:	ERR-alpha; ERR1; ERRA; ERRalpha; ESRL1; NR3B1; OTTHUMP00000198091



[View online »](#)

Note: Immunogen sequence homology: Dog: 100%; Pig: 100%; Rat: 100%; Horse: 100%; Human: 100%; Mouse: 100%; Bovine: 100%; Guinea pig: 100%

Product images:



WB Suggested Anti-Esrra Antibody; Titration: 1.0 ug/ml; Positive Control: Mouse liver