

Product datasheet for **TA330218**

ERF Rabbit Polyclonal Antibody

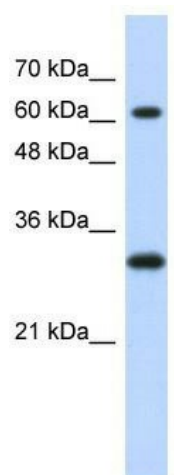
Product data:

Product Type:	Primary Antibodies
Applications:	WB
Recommended Dilution:	WB
Reactivity:	Human
Host:	Rabbit
Isotype:	IgG
Clonality:	Polyclonal
Immunogen:	The immunogen for anti-ERF antibody: synthetic peptide directed towards the middle region of human ERF. Synthetic peptide located within the following region: SSSPFKFLQRPLGRRQRAAGEKAVAAADKSGGSAGGLAEGAGALAPPP
Formulation:	Liquid. Purified antibody supplied in 1x PBS buffer with 0.09% (w/v) sodium azide and 2% sucrose. <i>Note that this product is shipped as lyophilized powder to China customers.</i>
Conjugation:	Unconjugated
Storage:	Store at -20°C as received.
Stability:	Stable for 12 months from date of receipt.
Predicted Protein Size:	59 kDa
Gene Name:	ETS2 repressor factor
Database Link:	NP_006485 Entrez Gene 2077 Human P50548
Background:	Members of the ETS family of transcription factors, such as ERF, regulate cell proliferation and differentiation. They share a highly conserved DNA-binding domain, the ETS domain, that recognizes the sequence GGAA/T.
Synonyms:	CRS4; PE-2; PE2
Note:	Immunogen sequence homology: Human: 92%
Protein Families:	Transcription Factors



[View online »](#)

Product images:



WB Suggested Anti-ERF Antibody Titration: 0.2-1 ug/ml; ELISA Titer: 1:62500; Positive Control: Transfected 293T