

## Product datasheet for **TA330216**

### NR2F6 Rabbit Polyclonal Antibody

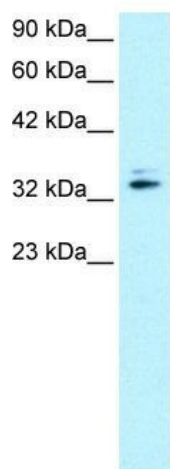
#### Product data:

Product Type:	Primary Antibodies
Applications:	WB
Recommended Dilution:	WB
Reactivity:	Human
Host:	Rabbit
Isotype:	IgG
Clonality:	Polyclonal
Immunogen:	The immunogen for anti-NR2F6 antibody: synthetic peptide directed towards the N terminal of human NR2F6. Synthetic peptide located within the following region: MAMVTGGWGGPGGDTNGVDKAGGYPRAAEDDSASPPGAASDAEPGDEERP
Formulation:	Liquid. Purified antibody supplied in 1x PBS buffer with 0.09% (w/v) sodium azide and 2% sucrose. <i>Note that this product is shipped as lyophilized powder to China customers.</i>
Purification:	Affinity Purified
Conjugation:	Unconjugated
Storage:	Store at -20°C as received.
Stability:	Stable for 12 months from date of receipt.
Predicted Protein Size:	43 kDa
Gene Name:	nuclear receptor subfamily 2 group F member 6
Database Link:	<a href="#">NP_005225</a> <a href="#">Entrez Gene 2063 Human</a> <a href="#">P10588</a>
Background:	NR2F6 is a nuclear orphan receptor that belongs to the COUP-TF subfamily
Synonyms:	EAR-2; EAR2; ERBAL2
Note:	Immunogen sequence homology: Human: 100%; Dog: 93%; Pig: 93%; Bovine: 93%; Guinea pig: 93%; Rat: 87%; Mouse: 87%
Protein Families:	Druggable Genome, Nuclear Hormone Receptor, Transcription Factors



[View online »](#)

## Product images:



Rabbit Anti-NR2F6 Antibody  
Catalog Number: TA330216

Lane: Jurkat Cell Lysate

Antibody Titration: 0.2  $\mu$ g/ml  
Gel Concentration: 12%

WB Suggested Anti-NR2F6 Antibody; Titration: 0.2  
ug/ml; Positive Control: Jurkat Whole Cell