

Product datasheet for **TA330214**

HIF 2 alpha (EPAS1) Rabbit Polyclonal Antibody

Product data:

| | |
|-------------------------|---|
| Product Type: | Primary Antibodies |
| Applications: | WB |
| Recommended Dilution: | WB |
| Reactivity: | Human |
| Host: | Rabbit |
| Isotype: | IgG |
| Clonality: | Polyclonal |
| Immunogen: | The immunogen for anti-EPAS1 antibody: synthetic peptide directed towards the middle region of human EPAS1. Synthetic peptide located within the following region: ESLFKPHLMAMNSIFDSSGKGA VSEKSNFLFTKLKEEPELAQLAPTPGD |
| Formulation: | Liquid. Purified antibody supplied in 1x PBS buffer with 0.09% (w/v) sodium azide and 2% sucrose. |
| Conjugation: | Unconjugated |
| Storage: | Store at -20°C as received. |
| Stability: | Stable for 12 months from date of receipt. |
| Predicted Protein Size: | 90 kDa |
| Gene Name: | endothelial PAS domain protein 1 |
| Database Link: | NP_001421 Entrez Gene 2034 Human Q99814 |
| Background: | EPAS1 is a transcription factor involved in the induction of oxygen regulated genes. EPAS1 binds to core DNA sequence 5'-[AG]CGTG-3' within the hypoxia response element (HRE) of target gene promoters. EPAS1 regulates the vascular endothelial growth factor (VEGF) expression and seems to be implicated in the development of blood vessels and the tubular system of lung. EPAS1 may also play a role in the formation of the endothelium that gives rise to the blood brain barrier. EPAS1 is a potent activator of the Tie-2 tyrosine kinase expression. The activation seems to require recruitment of transcriptional coactivators such as CREBPB and probably EP300. Interaction of EPAS1 with redox regulatory protein APEX seems to activate CTAD. |



[View online »](#)

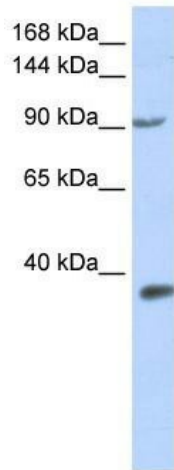
Synonyms: bHLHe73; ECYT4; HIF2A; HLF; MOP2; PASD2

Note: Immunogen sequence homology: Dog: 100%; Pig: 100%; Rat: 100%; Horse: 100%; Human: 100%; Mouse: 100%; Bovine: 100%; Rabbit: 100%; Guinea pig: 100%; Zebrafish: 93%

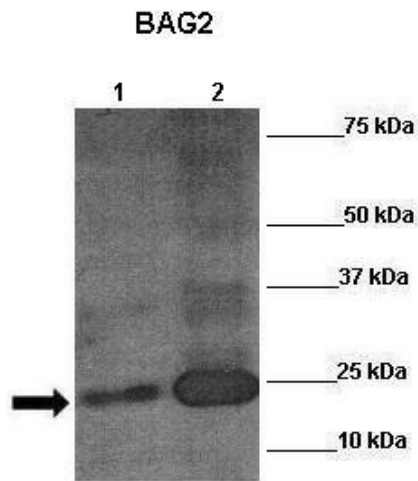
Protein Families: Druggable Genome, Transcription Factors

Protein Pathways: Pathways in cancer, Renal cell carcinoma

Product images:



WB Suggested Anti-EPAS1 Antibody Titration: 0.2-1 ug/ml; ELISA Titer: 1:312500; Positive Control: 293T cell lysate



Host: Rabbit; Target Name: EPAS1; Sample Tissue: Human placenta;