

## Product datasheet for **TA330212**

### **ESE1 (ELF3) Rabbit Polyclonal Antibody**

#### **Product data:**

Product Type:	Primary Antibodies
Applications:	WB
Recommended Dilution:	WB
Reactivity:	Human
Host:	Rabbit
Isotype:	IgG
Clonality:	Polyclonal
Immunogen:	The immunogen for anti-ELF3 antibody: synthetic peptide directed towards the middle region of human ELF3. Synthetic peptide located within the following region: PGSCGAGAPSPGSSDVSTAGTGASRSSHSSDSGGSDVDLDPTDGKLFPSD
Formulation:	Liquid. Purified antibody supplied in 1x PBS buffer with 0.09% (w/v) sodium azide and 2% sucrose. <i>Note that this product is shipped as lyophilized powder to China customers.</i>
Conjugation:	Unconjugated
Storage:	Store at -20°C as received.
Stability:	Stable for 12 months from date of receipt.
Predicted Protein Size:	41 kDa
Gene Name:	E74 like ETS transcription factor 3
Database Link:	<a href="#">NP_004424</a> <a href="#">Entrez Gene 1999 Human P78545</a>



[View online »](#)

**Background:**

ELF3 is a novel, highly tissue-restricted member of the ets transcription factor/oncogene family. ELF3 contains two putative DNA binding domains: an ETS domain, which is unique in that the 5' half shows relatively weak homology to known ets factors, and an A/T hook domain, found in HMG proteins and various other nuclear factors. In contrast to any known ets factors, ELF3 is expressed exclusively in epithelial cells. ELF3 is expected to be a critical regulator of epithelial cell differentiation. ETS factor ELF3 is a transcriptional regulator of angiopoietin-1 gene regulation in the setting of inflammation. ELF3 overexpressed early during human breast tumorigenesis. ELF3 expression confers a transformed and in vitro metastatic phenotype to otherwise normal MCF-12A cells. ELF3 mediates the expression of TGF-beta RII, and the transcriptional inhibition of ets-related transcription factor could be a one of the mechanisms of colonic carcinogenesis. ELF3 is positively and negatively modulated by other interacting proteins including Ku70, Ku86, p300, and CBP.

**Synonyms:**

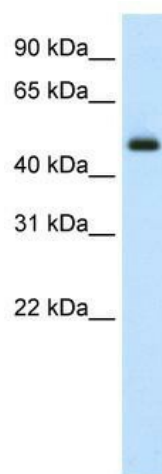
EPR-1; ERT; ESE-1; ESX

**Note:**

Immunogen sequence homology: Rat: 100%; Horse: 100%; Human: 100%; Rabbit: 100%; Dog: 93%; Mouse: 93%; Pig: 92%; Guinea pig: 92%; Bovine: 86%

**Protein Families:**

Transcription Factors

**Product images:**

WB Suggested Anti-ELF3 Antibody Titration: 2.5 ug/ml; ELISA Titer: 1:312500; Positive Control: Human Thymus