

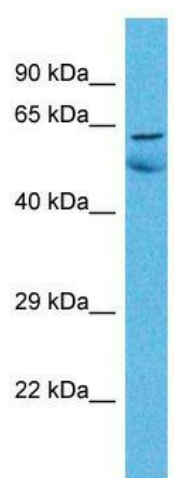
## Product datasheet for TA330211

### ZNF48 Rabbit Polyclonal Antibody

#### Product data:

Product Type:	Primary Antibodies
Applications:	WB
Recommended Dilution:	WB
Reactivity:	Human
Host:	Rabbit
Isotype:	IgG
Clonality:	Polyclonal
Immunogen:	The immunogen for Anti-ZNF48 antibody is: synthetic peptide directed towards the C-terminal region of Human ZNF48. Synthetic peptide located within the following region: LIPSPPPPLGTSPPLTPRSPSHSGEPFGLPGLEPEPGGPQAGEPPPPPLA
Formulation:	Liquid. Purified antibody supplied in 1x PBS buffer with 0.09% (w/v) sodium azide and 2% sucrose.
Conjugation:	Unconjugated
Storage:	Store at -20°C as received.
Stability:	Stable for 12 months from date of receipt.
Predicted Protein Size:	68 kDa
Gene Name:	zinc finger protein 48
Database Link:	<a href="#">NP_689865</a> <a href="#">Entrez Gene 197407 Human</a> <a href="#">Q96MX3</a>
Background:	ZNF48 may be involved in transcriptional regulation.
Synonyms:	ZNF553
Note:	Immunogen sequence homology: Human: 100%; Rabbit: 93%; Dog: 87%; Pig: 87%; Goat: 87%; Bovine: 87%; Guinea pig: 87%; Rat: 80%; Mouse: 80%


[View online »](#)

**Product images:**


Host: Rabbit; Target Name: ZNF48; Sample  
Tissue: Lung Tumor lysates; Antibody Dilution:  
1.0ug/ml