

Product datasheet for **TA330210**

Aryl hydrocarbon Receptor (AHR) Rabbit Polyclonal Antibody

Product data:

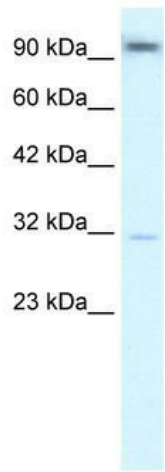
Product Type:	Primary Antibodies
Applications:	IHC, WB
Recommended Dilution:	WB, IHC
Reactivity:	Human
Host:	Rabbit
Isotype:	IgG
Clonality:	Polyclonal
Immunogen:	The immunogen for anti-AHR antibody: synthetic peptide directed towards the N terminal of human AHR. Synthetic peptide located within the following region: RAKSFFDVALKSSPTERNGGQDNCRAANFREGLNLQEGEFLQLNGFVL
Formulation:	Liquid. Purified antibody supplied in 1x PBS buffer with 0.09% (w/v) sodium azide and 2% sucrose. <i>Note that this product is shipped as lyophilized powder to China customers.</i>
Conjugation:	Unconjugated
Storage:	Store at -20°C as received.
Stability:	Stable for 12 months from date of receipt.
Predicted Protein Size:	96 kDa
Gene Name:	aryl hydrocarbon receptor
Database Link:	NP_001612 Entrez Gene 196 Human P35869
Background:	AHR is a ligand-activated transcription factor involved in the regulation of biological responses to planar aromatic hydrocarbons. This receptor has been shown to regulate xenobiotic-metabolizing enzymes such as cytochrome P450. Its ligands included a variety of aromatic hydrocarbons.
Synonyms:	bHLHe76
Note:	Immunogen sequence homology: Human: 100%; Pig: 93%; Guinea pig: 93%; Dog: 86%; Rat: 86%; Mouse: 86%; Sheep: 86%; Bovine: 86%; Rabbit: 79%



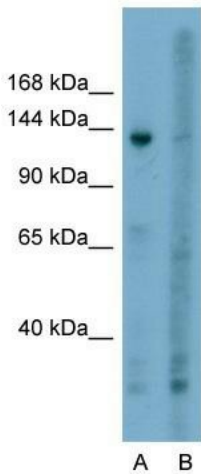
[View online »](#)

Protein Families: Druggable Genome, Nuclear Hormone Receptor, Transcription Factors

Product images:



WB Suggested Anti-AHR Antibody Titration: 2.5 ug/ml; Positive Control: HepG2 cell lysate



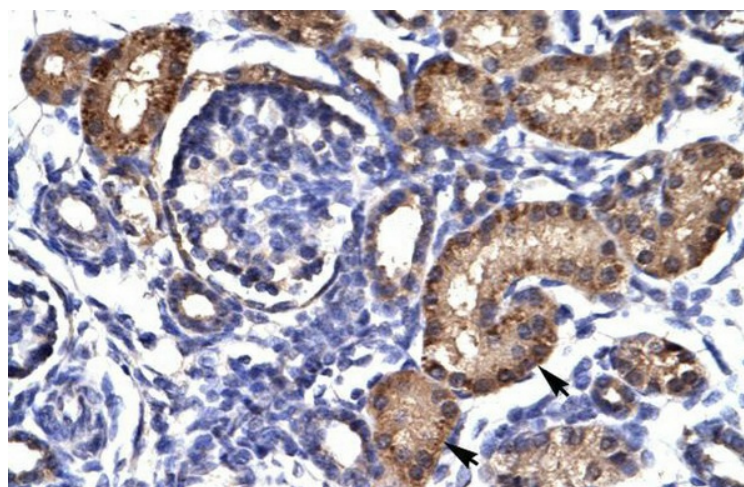
Anti-AHR Western Blot & Peptide Block Validation

Lot Number: QC1712
Lysate: HepG2 Cell

Lane A: Primary Antibody
Lane B: Primary Antibody + Blocking Peptide

Primary Antibody Concentration: 5.0µg/ml
Peptide Concentration: 2.0µg/ml
Lysate Quantity: 25µg/lane
Gel Concentration: 6-18%

Host: Rabbit; Target Name: AHR; Sample Tissue: HepG2; Lane A: Primary Antibody; Lane B: Primary Antibody + Blocking Peptide ; Primary Antibody Concentration:5.0 ug/mL; Peptide Concentration: 2.0 ug/mL; Lysate Quantity: 25 ug/lane; Gel Concentration: 6%-18%



Human kidney