

## Product datasheet for **TA330209**

### EGR1 Rabbit Polyclonal Antibody

#### Product data:

Product Type:	Primary Antibodies
Applications:	IHC, WB
Recommended Dilution:	WB, IHC
Reactivity:	Human
Host:	Rabbit
Isotype:	IgG
Clonality:	Polyclonal
Immunogen:	The immunogen for anti-EGR1 antibody: synthetic peptide directed towards the N terminal of human EGR1. Synthetic peptide located within the following region: DNYPKLEEMMLLSNGAPQLGAAGAPEGSGSNSSSSSSGGGGGGGGGSNS
Formulation:	Liquid. Purified antibody supplied in 1x PBS buffer with 0.09% (w/v) sodium azide and 2% sucrose. <i>Note that this product is shipped as lyophilized powder to China customers.</i>
Conjugation:	Unconjugated
Storage:	Store at -20°C as received.
Stability:	Stable for 12 months from date of receipt.
Predicted Protein Size:	57 kDa
Gene Name:	early growth response 1
Database Link:	<a href="#">NP_001955</a> <a href="#">Entrez Gene 1958 Human P18146</a>



[View online »](#)

**Background:** Early Growth Response Protein 1 (EGR1, Krox-24 protein, nerve growth factor-induced protein A, Transcription factor ETR103, Zinc finger protein 225) belongs to the EGR family of C2H2-type zinc-finger proteins. It is a nuclear protein and functions as a transcriptional regulator. The products of target genes it activates are required for differentiation and mitogenesis. Studies suggest this is a cancer suppressor gene. The protein encoded by this gene belongs to the EGR family of C2H2-type zinc-finger proteins. It is a nuclear protein and functions as a transcriptional regulator. The products of target genes it activates are required for differentiation and mitogenesis. Studies suggest this is a cancer suppressor gene. Publication Note: This RefSeq record includes a subset of the publications that are available for this gene. Please see the Entrez Gene record to access additional publications.

**Synonyms:** AT225; G0S30; KROX-24; NGFI-A; TIS8; ZIF-268; ZNF225

**Note:** Immunogen sequence homology: Pig: 100%; Human: 100%; Rat: 93%; Horse: 93%; Bovine: 87%; Mouse: 86%; Rabbit: 86%

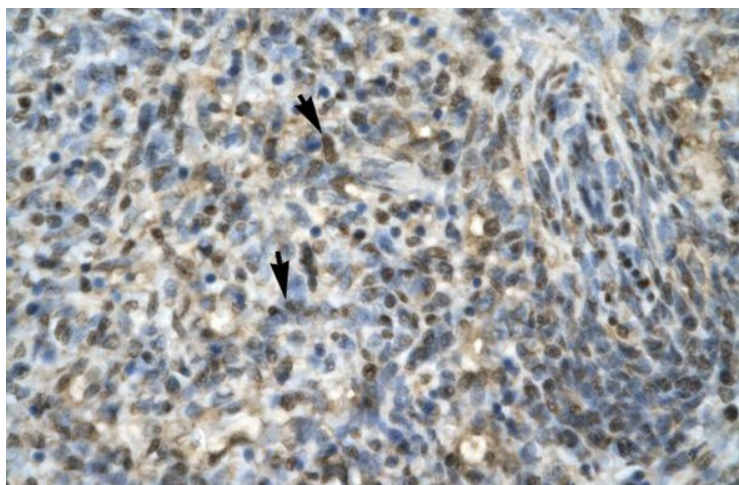
**Protein Families:** Druggable Genome

**Protein Pathways:** Prion diseases

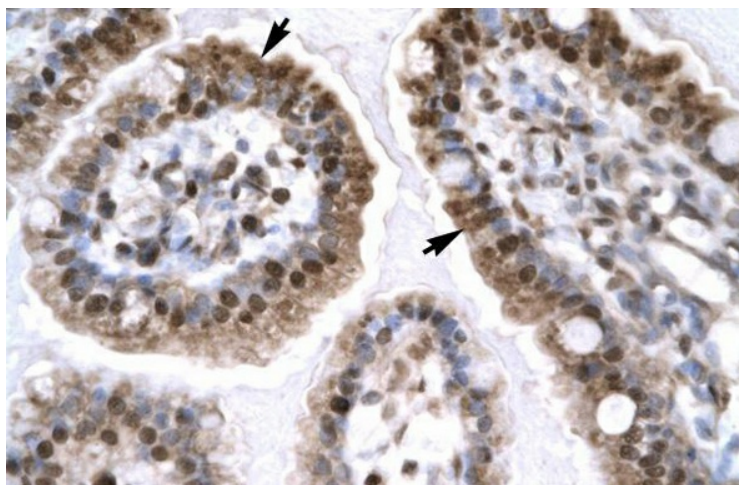
### Product images:



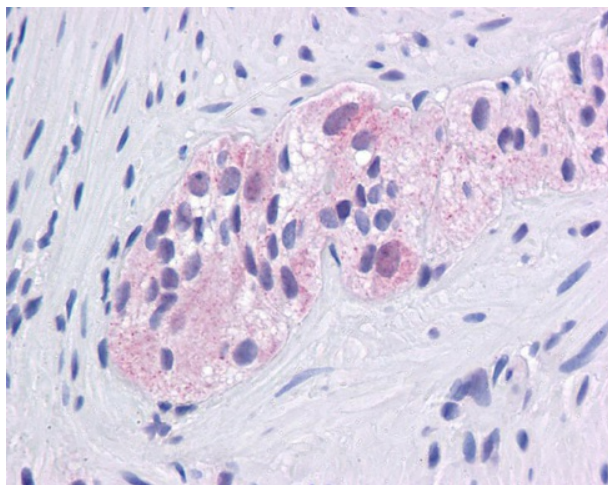
WB Suggested Anti-EGR1 Antibody Titration: 1 ug/ml; Positive Control: Jurkat cell lysate



Rabbit Anti-EGR1 Antibody; Paraffin Embedded Tissue: Human Spleen; Cellular Data: Spleen cells; Antibody Concentration: 4.0-8.0 ug/ml; Magnification: 400X



Rabbit Anti-EGR1 Antibody; Paraffin Embedded Tissue: Human Intestine; Cellular Data: Epithelial cells of intestinal villas; Antibody Concentration: 4.0-8.0 ug/ml; Magnification: 400X



Immunohistochemistry with Colon, myenteric plexus tissue at an antibody concentration of 5.0 ug/ml using anti-EGR1 antibody