

Product datasheet for **TA330208**

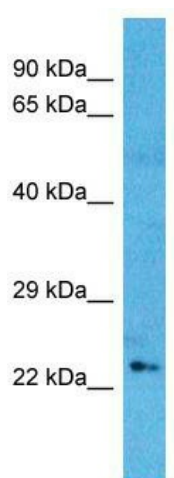
OSR1 Rabbit Polyclonal Antibody

Product data:

Product Type:	Primary Antibodies
Applications:	WB
Recommended Dilution:	WB
Reactivity:	Human
Host:	Rabbit
Isotype:	IgG
Clonality:	Polyclonal
Immunogen:	The immunogen for Anti-OSR1 antibody is: synthetic peptide directed towards the N-terminal region of Human OSR1. Synthetic peptide located within the following region: PIHPSLQLTNYSFLQAVNGLPTVPSDHLPNLYGFSALHAVHLHQWTLGYP
Formulation:	Liquid. Purified antibody supplied in 1x PBS buffer with 0.09% (w/v) sodium azide and 2% sucrose. <i>Note that this product is shipped as lyophilized powder to China customers.</i>
Conjugation:	Unconjugated
Storage:	Store at -20°C as received.
Stability:	Stable for 12 months from date of receipt.
Predicted Protein Size:	29 kDa
Gene Name:	odd-skipped related transcription factor 1
Database Link:	NP_660303 Entrez Gene 130497 Human Q8TAX0
Background:	OSR1 is a transcription factor that plays a role in the regulation of embryonic heart and urogenital development.
Synonyms:	ODD
Note:	Immunogen sequence homology: Dog: 100%; Pig: 100%; Rat: 100%; Horse: 100%; Human: 100%; Mouse: 100%; Bovine: 100%; Rabbit: 100%; Guinea pig: 93%



[View online »](#)

Product images:

Host: Rabbit; Target Name: OSR1; Sample Tissue:
Thymus Tumor lysates; Antibody Dilution:
1.0ug/ml