

Product datasheet for **TA330207**

SP7 Rabbit Polyclonal Antibody

Product data:

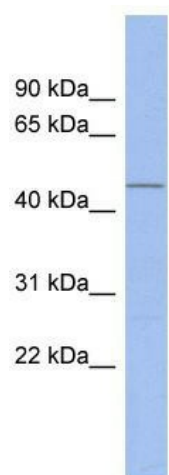
Product Type:	Primary Antibodies
Applications:	IHC, WB
Recommended Dilution:	WB, IHC
Reactivity:	Human
Host:	Rabbit
Isotype:	IgG
Clonality:	Polyclonal
Immunogen:	The immunogen for anti-SP7 antibody: synthetic peptide directed towards the N terminal of human SP7. Synthetic peptide located within the following region: MASSLLEEVHYGSSPLAMLTAAACSKFGGSSPLRDSTTLGKAGTKKPYSV
Formulation:	Liquid. Purified antibody supplied in 1x PBS buffer with 0.09% (w/v) sodium azide and 2% sucrose. <i>Note that this product is shipped as lyophilized powder to China customers.</i>
Purification:	Affinity Purified
Conjugation:	Unconjugated
Storage:	Store at -20°C as received.
Stability:	Stable for 12 months from date of receipt.
Predicted Protein Size:	45 kDa
Gene Name:	Sp7 transcription factor
Database Link:	NP_690599 Entrez Gene 121340 Human Q8TDD2
Background:	SP7 is a C2H2-type zinc finger transcription factor of the SP gene family and a putative master regulator of bone cell differentiation.
Synonyms:	OI11; OI12; osterix; OSX
Note:	Immunogen sequence homology: Pig: 100%; Horse: 100%; Human: 100%; Bovine: 100%; Dog: 93%; Mouse: 93%; Rabbit: 93%; Rat: 86%; Guinea pig: 86%



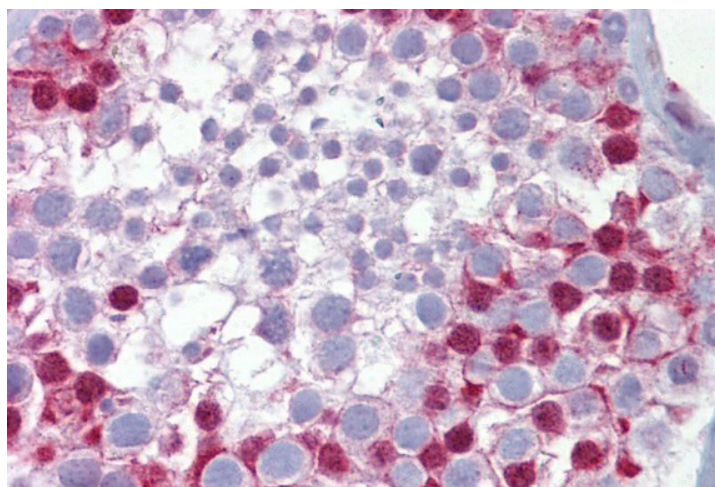
[View online »](#)

Protein Families: ES Cell Differentiation/IPS, Transcription Factors

Product images:



WB Suggested Anti-SP7 Antibody Titration: 0.2-1 ug/ml; ELISA Titer: 1:312500; Positive Control: Human kidney



Immunohistochemistry with Testis tissue at an antibody concentration of 5ug/ml using anti-SP7 antibody