

Product datasheet for **TA330200**

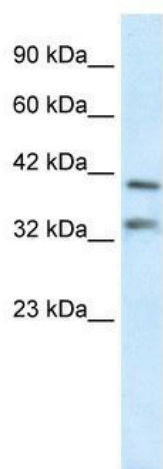
GSH2 (GSX2) Rabbit Polyclonal Antibody

Product data:

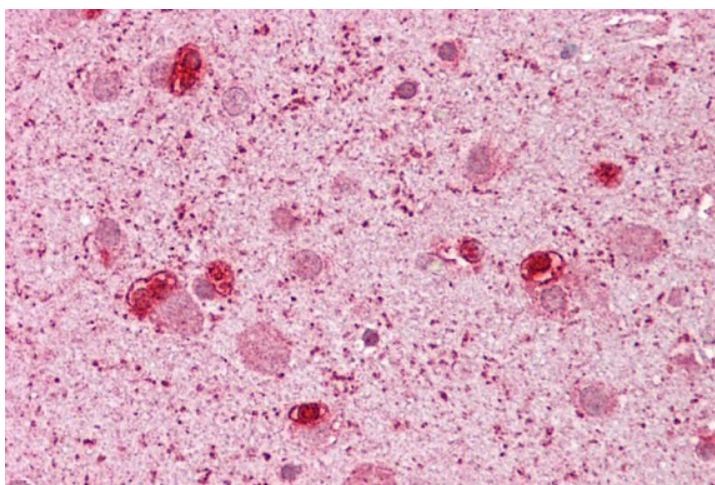
Product Type:	Primary Antibodies
Applications:	IHC, WB
Recommended Dilution:	WB, IHC
Reactivity:	Human
Host:	Rabbit
Isotype:	IgG
Clonality:	Polyclonal
Immunogen:	The immunogen for anti-GSH2 antibody: synthetic peptide directed towards the N terminal of human GSH2. Synthetic peptide located within the following region: MSRSFYVDSLIIKDTSRPAPSLPEPHPGPDFFIPLGMPPPLVMSVSGPGC
Formulation:	Liquid. Purified antibody supplied in 1x PBS buffer with 0.09% (w/v) sodium azide and 2% sucrose. <i>Note that this product is shipped as lyophilized powder to China customers.</i>
Conjugation:	Unconjugated
Storage:	Store at -20°C as received.
Stability:	Stable for 12 months from date of receipt.
Predicted Protein Size:	32 kDa
Gene Name:	GS homeobox 2
Database Link:	NP_573574 Entrez Gene 170825 Human Q9BZM3
Background:	homeobox protein GSH-2
Synonyms:	GSH2
Note:	Immunogen sequence homology: Dog: 100%; Pig: 100%; Horse: 100%; Human: 100%; Bovine: 100%; Rabbit: 100%; Rat: 93%; Mouse: 93%; Guinea pig: 93%



[View online »](#)

Product images:

WB Suggested Anti-GSH2 Antibody Titration: 0.2-1 ug/ml; ELISA Titer: 1:62500; Positive Control: Human Liver



Immunohistochemistry with Brain, cortex tissue at an antibody concentration of 5ug/ml using anti-GSH2 antibody