

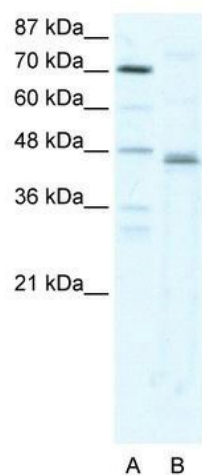
## Product datasheet for **TA330195**

### ZNF475 (ZFP1) Rabbit Polyclonal Antibody

#### Product data:

Product Type:	Primary Antibodies
Applications:	WB
Recommended Dilution:	WB
Reactivity:	Human
Host:	Rabbit
Isotype:	IgG
Clonality:	Polyclonal
Immunogen:	The immunogen for anti-ZFP1 antibody: synthetic peptide directed towards the N terminal of human ZFP1. Synthetic peptide located within the following region: VSLRQVPYKYDLYEKTLYNSDLLNSNRSYAGKQTDECNEFGKALLYLKQ
Formulation:	Liquid. Purified antibody supplied in 1x PBS buffer with 0.09% (w/v) sodium azide and 2% sucrose.
Conjugation:	Unconjugated
Storage:	Store at -20°C as received.
Stability:	Stable for 12 months from date of receipt.
Predicted Protein Size:	41 kDa
Gene Name:	ZFP1 zinc finger protein
Database Link:	<a href="#">NP_710155</a> <a href="#">Entrez Gene 162239 Human</a> <a href="#">Q6P2D0</a>
Background:	ZFP1 is a candidate transcription factor
Synonyms:	ZNF475
Note:	Immunogen sequence homology: Dog: 100%; Pig: 100%; Rat: 100%; Human: 100%; Mouse: 100%; Bovine: 100%; Rabbit: 100%; Horse: 92%; Guinea pig: 92%
Protein Families:	Transcription Factors


[View online »](#)

**Product images:**


WB Suggested Anti-ZFP1 Antibody Titration:  
2.5ug/ml; ELISA Titer: 1:1562500; Positive Control:  
HepG2 cell lysate