

Product datasheet for **TA330194**

FOG1 (ZFPM1) Rabbit Polyclonal Antibody

Product data:

Product Type:	Primary Antibodies
Applications:	WB
Recommended Dilution:	WB
Reactivity:	Human
Host:	Rabbit
Isotype:	IgG
Clonality:	Polyclonal
Immunogen:	The immunogen for anti-ZFPM1 antibody: synthetic peptide directed towards the middle region of human ZFPM1. Synthetic peptide located within the following region: PPPPPPGHAPAPESPRPGSGSGSGPGLAPARSPGPAADGPIDLSKKPRRP
Formulation:	Liquid. Purified antibody supplied in 1x PBS buffer with 0.09% (w/v) sodium azide and 2% sucrose. <i>Note that this product is shipped as lyophilized powder to China customers.</i>
Conjugation:	Unconjugated
Storage:	Store at -20°C as received.
Stability:	Stable for 12 months from date of receipt.
Predicted Protein Size:	105 kDa
Gene Name:	zinc finger protein, FOG family member 1
Database Link:	NP_722520 Entrez Gene 161882 Human Q8IX07
Background:	ZFPM1 is a transcription regulator that plays an essential role in erythroid and megakaryocytic cell differentiation. ZFPM1 is an essential cofactor that acts via the formation of a heterodimer with transcription factors of the GATA family GATA1, GATA2 and GATA3. Such heterodimer can both activate or repress transcriptional activity, depending on the cell and promoter context. The heterodimer formed with GATA proteins is essential to activate expression of genes such as NFE2, ITGA2B, alpha- and beta-globin, while it represses expression of KLF1. ZFPM1 may be involved in regulation of some genes in gonads. ZFPM1 may also be involved in cardiac development, in a non-redundant way with ZFPM2/FOG2.

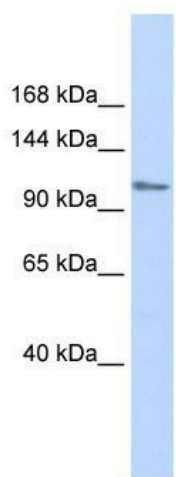


[View online »](#)

Synonyms: FOG; FOG1; ZC2HC11A; ZNF89A; ZNF408

Note: Immunogen sequence homology: Human: 100%; Bovine: 91%; Rat: 83%

Product images:



WB Suggested Anti-ZFPM1 Antibody Titration:
0.2-1 ug/ml; ELISA Titer: 1:62500; Positive Control:
Human Muscle