

Product datasheet for **TA330192**

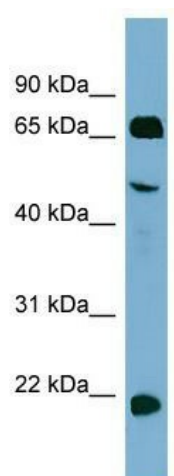
PARIS (ZNF746) Rabbit Polyclonal Antibody

Product data:

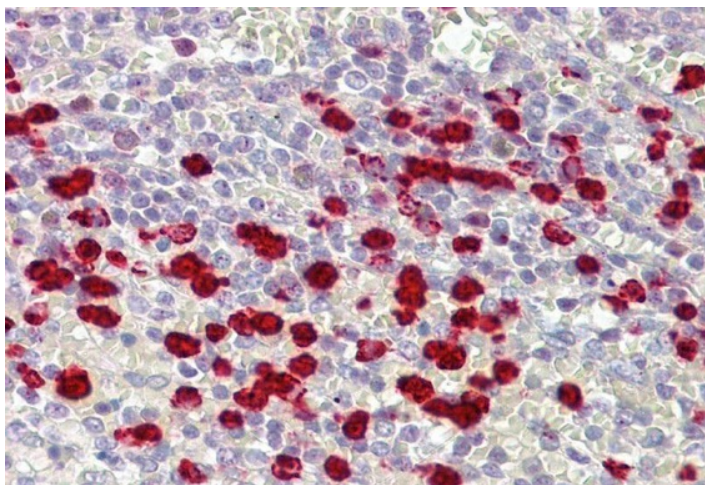
Product Type:	Primary Antibodies
Applications:	IHC, WB
Recommended Dilution:	WB, IHC
Reactivity:	Human
Host:	Rabbit
Isotype:	IgG
Clonality:	Polyclonal
Immunogen:	The immunogen for anti-ZNF746 antibody: synthetic peptide directed towards the middle region of human ZNF746. Synthetic peptide located within the following region: TGPEGLPYSSPDNGEAILDPSQAPRPFNEPCKYPGRTKGFHGKPLKHP
Formulation:	Liquid. Purified antibody supplied in 1x PBS buffer with 0.09% (w/v) sodium azide and 2% sucrose. <i>Note that this product is shipped as lyophilized powder to China customers.</i>
Conjugation:	Unconjugated
Storage:	Store at -20°C as received.
Stability:	Stable for 12 months from date of receipt.
Predicted Protein Size:	69 kDa
Gene Name:	zinc finger protein 746
Database Link:	NP_689770 Entrez Gene 155061 Human Q6NUN9
Background:	ZNF746 may be involved in transcriptional regulation.
Synonyms:	PARIS
Note:	Immunogen sequence homology: Pig: 100%; Rat: 100%; Human: 100%; Mouse: 100%; Bovine: 100%; Rabbit: 100%; Guinea pig: 93%



[View online »](#)

Product images:

WB Suggested Anti-ZNF746 Antibody Titration:
0.2-1 ug/ml; ELISA Titer: 1:312500; Positive
Control: HT1080 cell lysate



IHC Suggested Anti-ZNF746 antibody; Titration:
5ug/ ml; Positive Control: Spleen