

## Product datasheet for **TA330190**

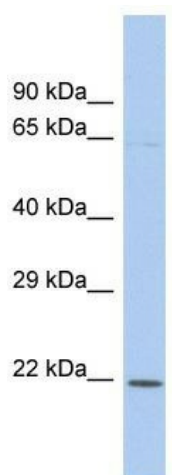
### **KLF3 Rabbit Polyclonal Antibody**

#### **Product data:**

<b>Product Type:</b>	Primary Antibodies
<b>Applications:</b>	WB
<b>Recommended Dilution:</b>	WB
<b>Reactivity:</b>	Human
<b>Host:</b>	Rabbit
<b>Isotype:</b>	IgG
<b>Clonality:</b>	Polyclonal
<b>Immunogen:</b>	The immunogen for Anti-KLF3 antibody is: synthetic peptide directed towards the C-terminal region of Human KLF3. Synthetic peptide located within the following region: SHLQQPLMVSLSSEEMENSSSSMQVPVIESYEKPIQKIKIEPGIEPQRT
<b>Formulation:</b>	Liquid. Purified antibody supplied in 1x PBS buffer with 0.09% (w/v) sodium azide and 2% sucrose. <i>Note that this product is shipped as lyophilized powder to China customers.</i>
<b>Conjugation:</b>	Unconjugated
<b>Storage:</b>	Store at -20°C as received.
<b>Stability:</b>	Stable for 12 months from date of receipt.
<b>Predicted Protein Size:</b>	25 kDa
<b>Gene Name:</b>	Kruppel-like factor 3 (basic)
<b>Database Link:</b>	<a href="#">NP_057615</a> <a href="#">Entrez Gene 51274 Human P57682</a>
<b>Background:</b>	KLF3 binds to the CACCC box of erythroid cell-expressed genes and may play a role in hematopoiesis.
<b>Synonyms:</b>	BKLF
<b>Note:</b>	Immunogen sequence homology: Dog: 100%; Pig: 100%; Rat: 100%; Horse: 100%; Human: 100%; Mouse: 100%; Bovine: 100%; Rabbit: 100%; Guinea pig: 93%
<b>Protein Families:</b>	Transcription Factors



[View online »](#)

**Product images:**

Host: Rabbit; Target Name: KLF3; Sample Tissue: THP-1 Whole Cell lysates; Antibody Dilution: 1.0ug/ml