

## Product datasheet for **TA330189**

### KLF3 Rabbit Polyclonal Antibody

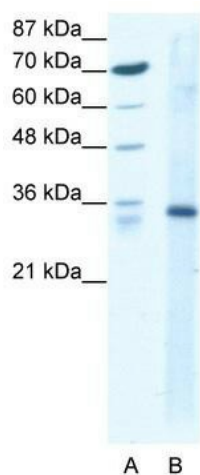
#### Product data:

Product Type:	Primary Antibodies
Applications:	WB
Recommended Dilution:	WB
Reactivity:	Human
Host:	Rabbit
Isotype:	IgG
Clonality:	Polyclonal
Immunogen:	The immunogen for anti-KLF3 antibody: synthetic peptide directed towards the N terminal of human KLF3. Synthetic peptide located within the following region: LSHGIQMEPVDLTVNKRSSPPSAGNSPSSLKFPSSHRRASPGLSMPSSSP
Formulation:	Liquid. Purified antibody supplied in 1x PBS buffer with 0.09% (w/v) sodium azide and 2% sucrose. <i>Note that this product is shipped as lyophilized powder to China customers.</i>
Conjugation:	Unconjugated
Storage:	Store at -20°C as received.
Stability:	Stable for 12 months from date of receipt.
Predicted Protein Size:	39 kDa
Gene Name:	Kruppel-like factor 3 (basic)
Database Link:	<a href="#">NP_057615</a> <a href="#">Entrez Gene 51274 Human P57682</a>
Background:	KLF3 is a zinc finger transcription factor that is known to function as a potent transcriptional repressor
Synonyms:	BKLF
Note:	Immunogen sequence homology: Pig: 100%; Horse: 100%; Human: 100%; Bovine: 100%; Rabbit: 100%; Guinea pig: 100%; Dog: 93%; Rat: 92%; Mouse: 86%
Protein Families:	Transcription Factors



[View online »](#)

## Product images:



WB Suggested Anti-KLF3 Antibody Titration:  
1.25ug/ml; Positive Control: HepG2 cell  
lysate KLF3 is supported by BioGPS gene  
expression data to be expressed in HepG2