

Product datasheet for **TA330187**

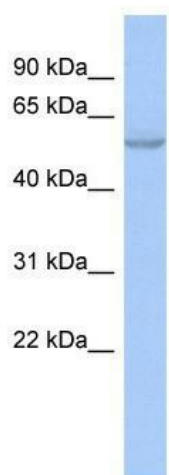
ZNF 639 (ZNF639) Rabbit Polyclonal Antibody

Product data:

Product Type:	Primary Antibodies
Applications:	WB
Recommended Dilution:	WB
Reactivity:	Human
Host:	Rabbit
Isotype:	IgG
Clonality:	Polyclonal
Immunogen:	The immunogen for anti-ZNF639 antibody: synthetic peptide directed towards the N terminal of human ZNF639. Synthetic peptide located within the following region: MNEYPKKRKRTLHPSRYSDSSGISRIADGFNGIFSDHCYSVCSMRQPD
Formulation:	Liquid. Purified antibody supplied in 1x PBS buffer with 0.09% (w/v) sodium azide and 2% sucrose.
Conjugation:	Unconjugated
Storage:	Store at -20°C as received.
Stability:	Stable for 12 months from date of receipt.
Predicted Protein Size:	56 kDa
Gene Name:	zinc finger protein 639
Database Link:	NP_057415 Entrez Gene 51193 Human Q9UID6
Background:	ZNF639 binds DNA and may function as a transcriptional repressor.
Synonyms:	ANC-2H01; ANC_2H01; ZASC1
Note:	Immunogen sequence homology: Rat: 100%; Horse: 100%; Human: 100%; Mouse: 100%; Bovine: 100%; Rabbit: 87%
Protein Families:	Transcription Factors

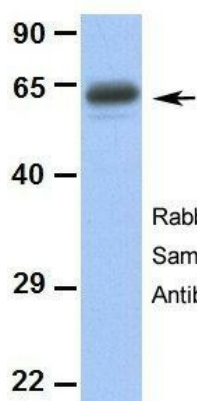

[View online »](#)

Product images:



WB Suggested Anti-ZNF639 Antibody Titration:
0.2-1 ug/ml; ELISA Titer: 1:62500; Positive Control:
Human Muscle

ZNF639



Rabbit Anti-ZNF639
Sample Type: Human Fetal Heart
Antibody Concentration: 1ug/mL

Hum. Fetal Heart

ZNF639

