

Product datasheet for **TA330186**

GSC Rabbit Polyclonal Antibody

Product data:

Product Type:	Primary Antibodies
Applications:	IHC, WB
Recommended Dilution:	WB, IHC
Reactivity:	Human
Host:	Rabbit
Isotype:	IgG
Clonality:	Polyclonal
Immunogen:	The immunogen for anti-GSC antibody: synthetic peptide directed towards the N terminal of human GSC. Synthetic peptide located within the following region: FPALHGDSLYGASGGASSDYGAFYPRPVAPGGAGLPAAVSGSRLGYNNYF
Formulation:	Liquid. Purified antibody supplied in 1x PBS buffer with 0.09% (w/v) sodium azide and 2% sucrose. <i>Note that this product is shipped as lyophilized powder to China customers.</i>
Conjugation:	Unconjugated
Storage:	Store at -20°C as received.
Stability:	Stable for 12 months from date of receipt.
Predicted Protein Size:	28 kDa
Gene Name:	gooseoid homeobox
Database Link:	NP_776248 Entrez Gene 145258 Human P56915
Background:	GSC regulates chordin (CHRD). GSC may play a role in spatial programming within discrete embryonic fields or lineage compartments during organogenesis. This gene encodes a member of the bicoid subfamily of the paired (PRD) homeobox family of proteins. The encoded protein acts as a transcription factor and may be autoregulatory. A similar protein in mice plays a role in craniofacial and rib cage development during embryogenesis.
Synonyms:	SAMS

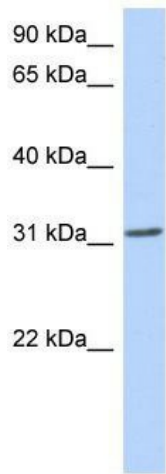


[View online »](#)

Note: Immunogen sequence homology: Pig: 100%; Human: 100%; Dog: 92%; Bovine: 86%; Rat: 85%; Mouse: 85%

Protein Families: Transcription Factors

Product images:

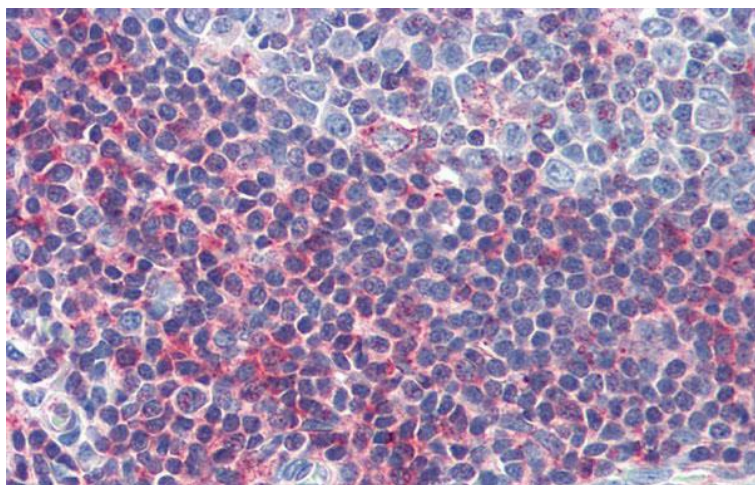


WB Suggested Anti-GSC Antibody Titration: 0.2-1 ug/ml; ELISA Titer: 1:12500; Positive Control: 721_B cell lysate

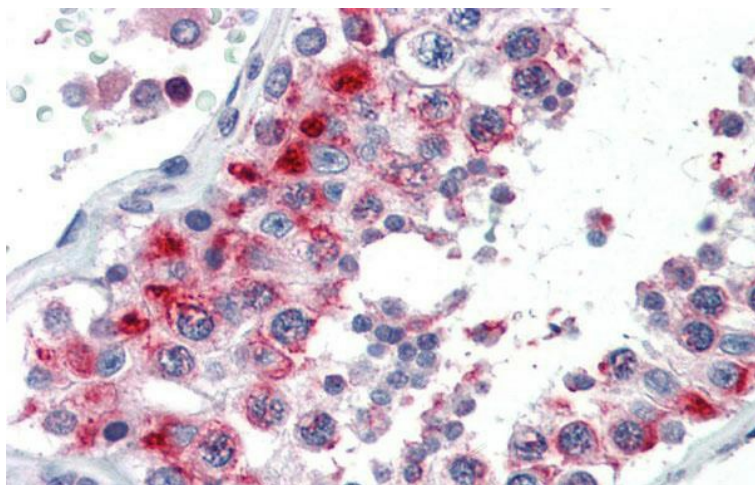


Host: Rabbit
 Target Name: GSC
 Sample Tissue: 786-0 Cell Lysate
 Antibody Dilution: 1.0µg/ml

Host: Rabbit; Target Name: GSC; Sample Tissue: 786-0 Whole Cell lysates; Antibody Dilution: 1.0ug/ml



Immunohistochemistry with Human Tonsil lysate tissue at an antibody concentration of 5.0ug/ml using anti-GSC antibody



Immunohistochemistry with Human Testis lysate tissue at an antibody concentration of 5.0ug/ml using anti-GSC antibody