

Product datasheet for **TA330185**

SLC34A3 Rabbit Polyclonal Antibody

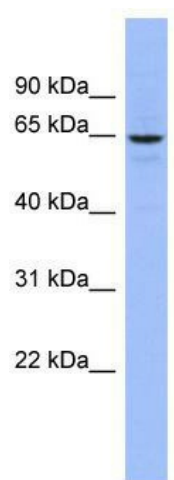
Product data:

Product Type:	Primary Antibodies
Applications:	WB
Recommended Dilution:	WB
Reactivity:	Human
Host:	Rabbit
Isotype:	IgG
Clonality:	Polyclonal
Immunogen:	The immunogen for anti-SLC34A3 antibody: synthetic peptide directed towards the middle region of human SLC34A3. Synthetic peptide located within the following region: LLERLSELALGAASLTPRAQPDILKVLTKPLTHLIVQLDSDMIMSSATG
Formulation:	Liquid. Purified antibody supplied in 1x PBS buffer with 0.09% (w/v) sodium azide and 2% sucrose. <i>Note that this product is shipped as lyophilized powder to China customers.</i>
Conjugation:	Unconjugated
Storage:	Store at -20°C as received.
Stability:	Stable for 12 months from date of receipt.
Predicted Protein Size:	63 kDa
Gene Name:	solute carrier family 34 member 3
Database Link:	NP_543153 Entrez Gene 142680 Human Q8N130
Background:	SLC34A3 contributes to the maintenance of inorganic phosphate (Pi) concentration at the kidney.
Synonyms:	HHRH; NPTIIc
Note:	Immunogen sequence homology: Rat: 100%; Human: 100%; Mouse: 100%; Dog: 85%
Protein Families:	Transmembrane



[View online »](#)

Product images:



WB Suggested Anti-SLC34A3 Antibody Titration:
0.2-1 ug/ml; ELISA Titer: 1:1562500; Positive
Control: COLO205 cell lysate