

Product datasheet for **TA330184**

ATF6 beta (ATF6B) Rabbit Polyclonal Antibody

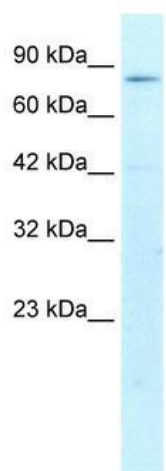
Product data:

Product Type:	Primary Antibodies
Applications:	WB
Recommended Dilution:	WB
Reactivity:	Human
Host:	Rabbit
Isotype:	IgG
Clonality:	Polyclonal
Immunogen:	The immunogen for anti-CREBL1 antibody: synthetic peptide directed towards the N terminal of human CREBL1. Synthetic peptide located within the following region: EIADPTRFFTDNLLSPEDWGLQNSTLYSGLDEVAEEQQLFRCPEQDVPF
Formulation:	Liquid. Purified antibody supplied in 1x PBS buffer with 0.09% (w/v) sodium azide and 2% sucrose. <i>Note that this product is shipped as lyophilized powder to China customers.</i>
Conjugation:	Unconjugated
Storage:	Store at -20°C as received.
Stability:	Stable for 12 months from date of receipt.
Predicted Protein Size:	77 kDa
Gene Name:	activating transcription factor 6 beta
Database Link:	NP_004372 Entrez Gene 1388 Human Q99941
Background:	CREBL1 bears sequence similarity with the Creb/ATF subfamily of the bZip superfamily of transcription factors. It localizes to both the cytoplasm and the nucleus. The gene localizes to the major histocompatibility complex (MHC) class III region on chromosome 6.
Synonyms:	CREB-RP; CREBL1; G13
Note:	Immunogen sequence homology: Rat: 100%; Human: 100%; Horse: 93%; Mouse: 93%; Pig: 86%; Bovine: 86%; Guinea pig: 79%
Protein Families:	Transcription Factors



[View online »](#)

Product images:



WB Suggested Anti-CREBL1 Antibody Titration:
1.0ug/ml; Positive Control: HepG2 cell lysate