

Product datasheet for **TA330180**

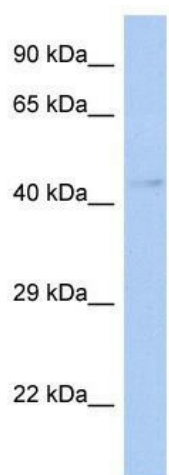
TFDP3 Rabbit Polyclonal Antibody

Product data:

Product Type:	Primary Antibodies
Applications:	WB
Recommended Dilution:	WB
Reactivity:	Human
Host:	Rabbit
Isotype:	IgG
Clonality:	Polyclonal
Immunogen:	The immunogen for anti-TFDP3 antibody: synthetic peptide directed towards the middle region of human TFDP3. Synthetic peptide located within the following region: QSELQQLILQQIAFKNLVLRNQYVEEQVSRPLPNSVIHVPFIHSSSKK
Formulation:	Liquid. Purified antibody supplied in 1x PBS buffer with 0.09% (w/v) sodium azide and 2% sucrose.
Conjugation:	Unconjugated
Storage:	Store at -20°C as received.
Stability:	Stable for 12 months from date of receipt.
Predicted Protein Size:	44 kDa
Gene Name:	transcription factor Dp family member 3
Database Link:	NP_057605 Entrez Gene 51270 Human Q5H9I0
Background:	The specific function of the protein remains unknown.
Synonyms:	CT30; DP4; HCA661
Note:	Immunogen sequence homology: Human: 100%



[View online »](#)

Product images:

WB Suggested Anti-TFDP3 Antibody Titration: 0.2-1 ug/ml; ELISA Titer: 1:62500; Positive Control: Human kidney