

## Product datasheet for **TA330177**

### Rabbit Antibody

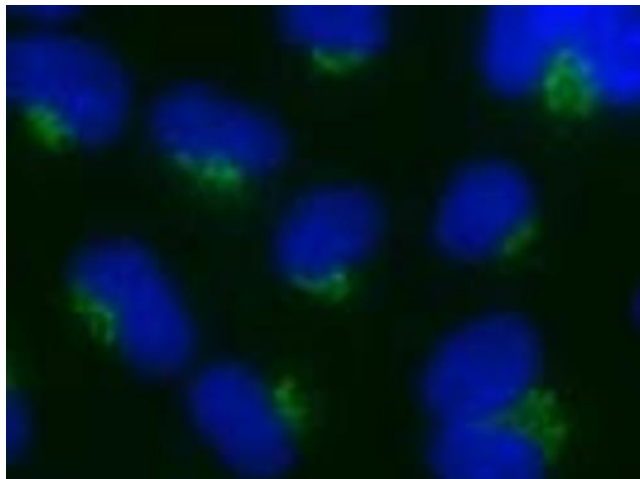
#### Product data:

Product Type:	Primary Antibodies
Reactivity:	Rat
Host:	Rabbit
Isotype:	IgG
Immunogen:	The immunogen for anti-NUCB1 antibody: synthetic peptide corresponding to a region of Rat. Synthetic peptide located within the following region: EQPPVLPQLDSQHL
Formulation:	Shipped as lyophilized powder. Purified antibody supplied in 1x PBS buffer with 0.09% (w/v) sodium azide and 2% sucrose.
Conjugation:	Unconjugated
Storage:	Store at -20°C as received.
Stability:	Stable for 12 months from date of receipt.
Predicted Protein Size:	54 kDa
Background:	An extracellular calcium binding protein of the mineralized matrix of bone [Calnuc or RGD:620030]. Also useful as a Golgi marker in immunohistochemistry (1:100 dilution).
Note:	Immunogen sequence homology: Rat: 100%; Mouse: 92%; Dog: 78%



[View online »](#)

**Product images:**



Rat NRK