

Product datasheet for **TA330172**

TFIIB (GTF2B) Rabbit Polyclonal Antibody

Product data:

Product Type:	Primary Antibodies
Applications:	IHC, WB
Recommended Dilution:	WB, IHC
Reactivity:	Human, Rat
Host:	Rabbit
Isotype:	IgG
Clonality:	Polyclonal
Immunogen:	The immunogen for anti-GTF2B antibody: synthetic peptide directed towards the N terminal of human GTF2B. Synthetic peptide located within the following region: NLPRNIVDRNTNNLFKQVYEQKSLKGRANDAIASACLYIACRQEGVPRTFK
Formulation:	Liquid. Purified antibody supplied in 1x PBS buffer with 0.09% (w/v) sodium azide and 2% sucrose. <i>Note that this product is shipped as lyophilized powder to China customers.</i>
Conjugation:	Unconjugated
Storage:	Store at -20°C as received.
Stability:	Stable for 12 months from date of receipt.
Predicted Protein Size:	35 kDa
Gene Name:	general transcription factor IIB
Database Link:	NP_001505 Entrez Gene 81673 Rat Entrez Gene 2959 Human Q00403
Background:	GTF2B is the general transcription factor IIB, one of the ubiquitous factors required for transcription initiation by RNA polymerase II. The protein localizes to the nucleus where it forms a complex (the DAB complex) with transcription factors IID and IIA. Transcription factor IIB serves as a bridge between IID, the factor which initially recognizes the promoter sequence, and RNA polymerase II.
Synonyms:	TF2B; TFIIB



[View online »](#)

Note: Immunogen sequence homology: Dog: 100%; Guinea pig: 100%; Horse: 100%; Human: 100%; Mouse: 100%; Pig: 100%; Rabbit: 100%; African clawed frog: 92%; Chicken: 92%; Zebrafish: 92%

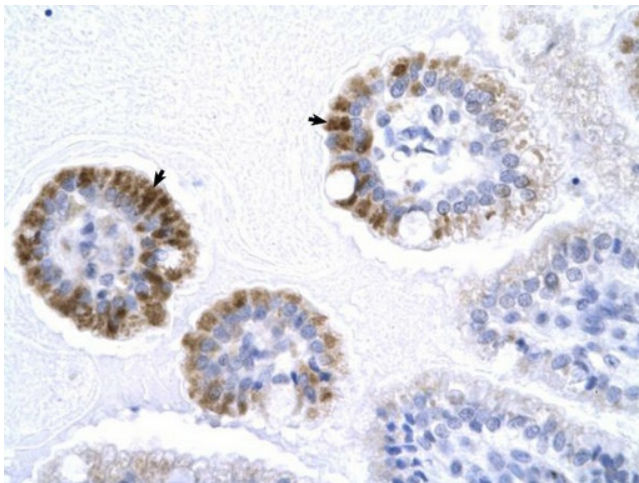
Protein Families: Druggable Genome, Transcription Factors

Protein Pathways: Basal transcription factors

Product images:



WB Suggested Anti-GTF2B Antibody Titration: 4.0ug/ml; Positive Control: HepG2 cell lysate



Human Intestine