

Product datasheet for **TA330168**

FOXG1 Rabbit Polyclonal Antibody

Product data:

Product Type:	Primary Antibodies
Applications:	IHC, WB
Recommended Dilution:	WB, IHC
Reactivity:	Human
Host:	Rabbit
Isotype:	IgG
Clonality:	Polyclonal
Immunogen:	The immunogen for anti-FOXG1A antibody: synthetic peptide directed towards the N terminal of human FOXG1A. Synthetic peptide located within the following region: GAPEGQRQLAQGDRRGRGICPVGPDKEKARAGGEEKKGAGEGGKDGEGG
Formulation:	Liquid. Purified antibody supplied in 1x PBS buffer with 0.09% (w/v) sodium azide and 2% sucrose. <i>Note that this product is shipped as lyophilized powder to China customers.</i>
Conjugation:	Unconjugated
Storage:	Store at -20°C as received.
Stability:	Stable for 12 months from date of receipt.
Predicted Protein Size:	51 kDa
Gene Name:	forkhead box G1
Database Link:	NP_005240 Entrez Gene 2290 Human P55316
Background:	Forkhead-related protein FKHL2 (brain factor 2, FOXG1A, Forkhead box protein G1A, HFK2) is a member of the fork head gene family of transcription factors.
Synonyms:	BF1; BF2; FHKL3; FKH2; FKHL1; FKHL2; FKHL3; FKHL4; FOXG1A; FOXG1B; FOXG1C; HBF-1; HBF-2; HBF-3
Note:	Immunogen sequence homology: Rat:86%; White rhinoceros:86%; Plains zebra:86%; Gambian epauletted fruit bat:86%; Rusty pipistrelle:86%; Vervet monkey:86%; White-faced sapajou:86%; Mouse:86%; Human:100%

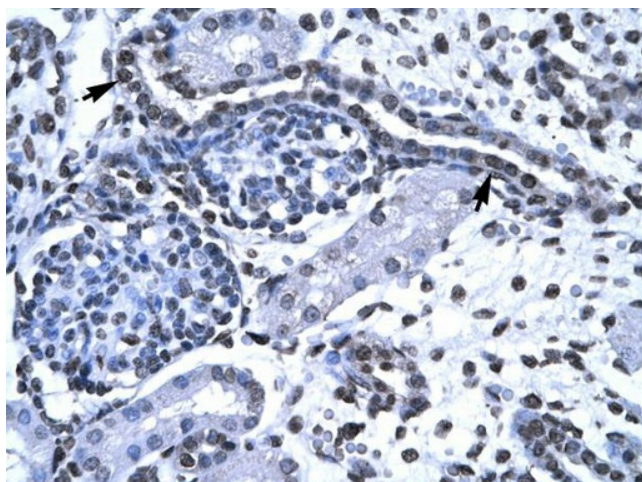


[View online »](#)

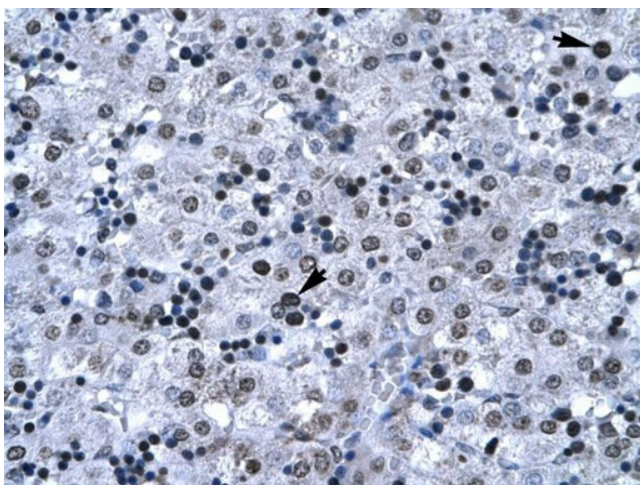
Protein Families: Druggable Genome, Transcription Factors

Product images:

WB Suggested Anti-FOXG1A Antibody Titration:
5.0-8.0ug/ml; Positive Control: Jurkat cell lysate



Human kidney



Human Liver