

Product datasheet for **TA330166**

HSF2 Rabbit Polyclonal Antibody

Product data:

Product Type:	Primary Antibodies
Applications:	WB
Recommended Dilution:	WB
Reactivity:	Human, Mouse
Host:	Rabbit
Isotype:	IgG
Clonality:	Polyclonal
Immunogen:	The immunogen for anti-HSF2 antibody: synthetic peptide directed towards the middle region of human HSF2. Synthetic peptide located within the following region: SSVQMNPTDYINNTKSENKGLETTKNNVVQPVSEEGRKS SKPDKQLIQY
Formulation:	Liquid. Purified antibody supplied in 1x PBS buffer with 0.09% (w/v) sodium azide and 2% sucrose. <i>Note that this product is shipped as lyophilized powder to China customers.</i>
Conjugation:	Unconjugated
Storage:	Store at -20°C as received.
Stability:	Stable for 12 months from date of receipt.
Predicted Protein Size:	60 kDa
Gene Name:	heat shock transcription factor 2
Database Link:	NP_004497 Entrez Gene 15500 Mouse Entrez Gene 3298 Human Q03933



[View online »](#)

Background:

HSF2 binds specifically to the heat-shock element and has homology to HSFs of other species. Heat shock transcription factors activate heat-shock response genes under conditions of heat or other stresses. Although the names HSF1 and HSF2 were chosen for historical reasons, these peptides should be referred to as heat-shock transcription factors. HSF2, as well as the related gene HSF1, encodes a protein that binds specifically to the heat-shock element and has homology to HSFs of other species. Heat shock transcription factors activate heat-shock response genes under conditions of heat or other stresses. Although the names HSF1 and HSF2 were chosen for historical reasons, these peptides should be referred to as heat-shock transcription factors. Publication Note: This RefSeq record includes a subset of the publications that are available for this gene. Please see the Entrez Gene record to access additional publications.

Synonyms:

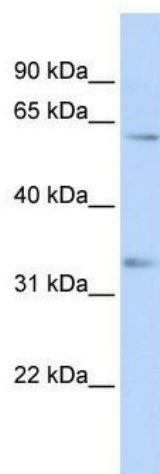
HSF 2; HSTF 2

Note:

Immunogen sequence homology: Human: 100%; Bovine: 92%; Guinea pig: 92%; Mouse: 92%; Pig: 92%; Rabbit: 92%; Rat: 92%

Protein Families:

Transcription Factors

Product images:

WB Suggested Anti-HSF2 Antibody Titration: 0.2-1 ug/ml; ELISA Titer: 1:12500; Positive Control: 721_B cell lysate HSF2 is supported by BioGPS gene expression data to be expressed in 721_B