

Product datasheet for **TA330165**

NFIC Rabbit Polyclonal Antibody

Product data:

Product Type:	Primary Antibodies
Applications:	IHC, WB
Recommended Dilution:	IHC, WB
Reactivity:	Human, Mouse
Host:	Rabbit
Isotype:	IgG
Clonality:	Polyclonal
Immunogen:	The immunogen for anti-NFIC antibody: synthetic peptide directed towards the middle region of human NFIC. Synthetic peptide located within the following region: KSPFNPSQPQDSPRLSSFTQHHRPVIAVHSGIARSPHPSSALHFPTTSIL
Formulation:	Liquid. Purified antibody supplied in 1x PBS buffer with 0.09% (w/v) sodium azide and 2% sucrose. <i>Note that this product is shipped as lyophilized powder to China customers.</i>
Conjugation:	Unconjugated
Storage:	Store at -20°C as received.
Stability:	Stable for 12 months from date of receipt.
Predicted Protein Size:	55 kDa
Gene Name:	nuclear factor I C
Database Link:	NP_995315 Entrez Gene 18029 Mouse Entrez Gene 4782 Human P08651
Background:	Brg- or hBrm-associated factor (BAF) complexes, a chromatin-remodeling complex family of mammalian cells, facilitate transcriptional activity by remodeling nucleosome structure. Brg1 is the core subunit of Brg-associated factor complexes. BAF complexes can interact with NF1/CTF and RNAP II, and this interaction is closely dependent on the activation of gene transcription.
Synonyms:	CTF; CTF5; NF-I; NFI

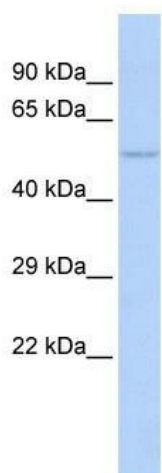


[View online »](#)

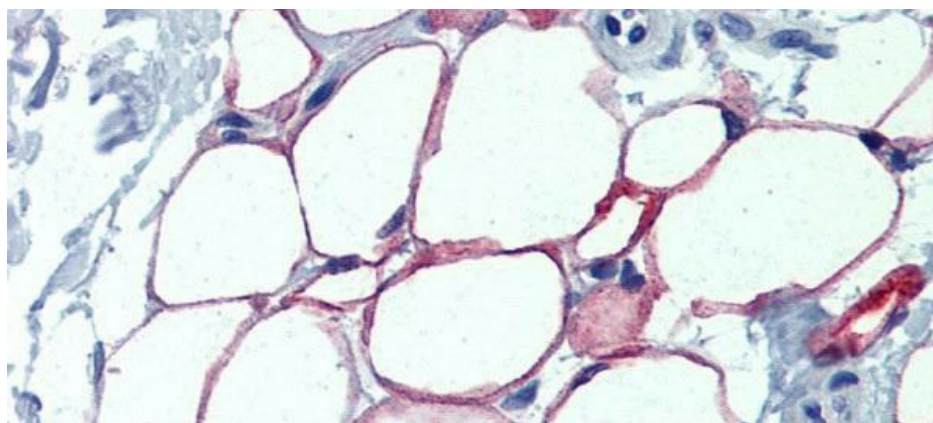
Note: Immunogen sequence homology: Bovine: 100%; Dog: 100%; Guinea pig: 100%; Human: 100%; Mouse: 100%; Pig: 100%; Rat: 100%; Chicken: 93%; African clawed frog: 86%

Protein Families: Transcription Factors

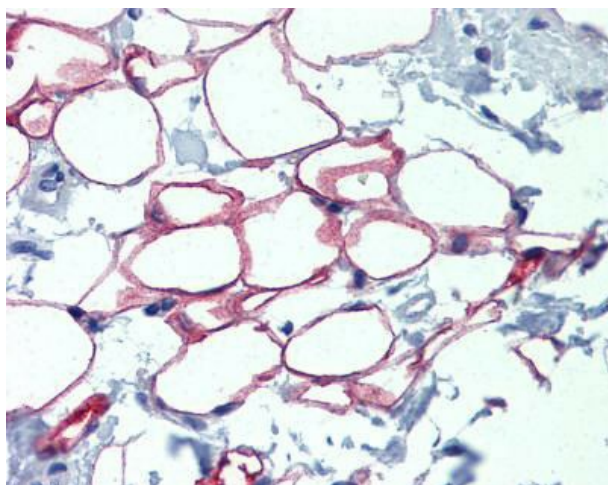
Product images:



WB Suggested Anti-NFIC Antibody Titration: 1 ug/ml; Positive Control: MCF-7 whole cell lysates



Immunohistochemistry with Human Adipocytes tissue



Human Adipocytes