

## Product datasheet for **TA330158**

### ELOC Rabbit Polyclonal Antibody

#### Product data:

Product Type:	Primary Antibodies
Applications:	WB
Recommended Dilution:	WB
Reactivity:	Human
Host:	Rabbit
Isotype:	IgG
Clonality:	Polyclonal
Immunogen:	The immunogen for anti-TCEB1 antibody: synthetic peptide directed towards the middle region of human TCEB1. Synthetic peptide located within the following region: AENETNEVNFREIPSHVLSKVCMYFTYKVRYTNSSTEIPEFPPIAPEIALE
Formulation:	Liquid. Purified antibody supplied in 1x PBS buffer with 0.09% (w/v) sodium azide and 2% sucrose. <i>Note that this product is shipped as lyophilized powder to China customers.</i>
Conjugation:	Unconjugated
Storage:	Store at -20°C as received.
Stability:	Stable for 12 months from date of receipt.
Predicted Protein Size:	12 kDa
Gene Name:	transcription elongation factor B subunit 1
Database Link:	<a href="#">NP_005639</a> <a href="#">Entrez Gene 6921 Human</a> <a href="#">Q15369</a>



[View online »](#)

**Background:**

TCEB1 is known as protein elongin C, which is a subunit of the transcription factor B (SIII) complex. The SIII complex is composed of elongins A/A2, B and C. It activates elongation by RNA polymerase II by suppressing transient pausing of the polymerase at many sites within transcription units. Elongin A functions as the transcriptionally active component of the SIII complex, whereas elongins B and C are regulatory subunits. Elongin A2 is specifically expressed in the testis, and capable of forming a stable complex with elongins B and C. The von Hippel-Lindau tumor suppressor protein binds to elongins B and C, and thereby inhibits transcription elongation. Western blots using two different antibodies (P100962-T200 and P100963\_P050 / P100963\_P100) against two unique regions of this protein target confirm the same apparent molecular weight in our tests.

**Synonyms:**

eloC; SIII

**Note:**

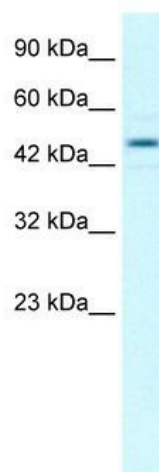
Immunogen sequence homology: African clawed frog: 100%; Chicken: 100%; Dog: 100%; Human: 100%; Zebrafish: 100%

**Protein Families:**

Druggable Genome, Transcription Factors

**Protein Pathways:**

Pathways in cancer, Renal cell carcinoma, Ubiquitin mediated proteolysis

**Product images:**

WB Suggested Anti-TCEB1 Antibody Titration: 1.0 ug/ml; Positive Control: Jurkat cell lysate TCEB1 is supported by BioGPS gene expression data to be expressed in Jurkat