

Product datasheet for **TA330157**

SNAP45 (SNAPC2) Rabbit Polyclonal Antibody

Product data:

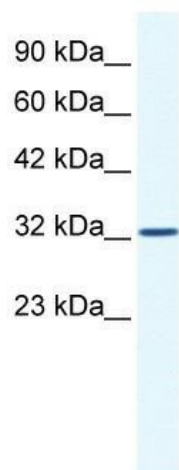
Product Type:	Primary Antibodies
Applications:	IHC, WB
Recommended Dilution:	WB, IHC
Reactivity:	Human
Host:	Rabbit
Isotype:	IgG
Clonality:	Polyclonal
Immunogen:	The immunogen for anti-SNAPC2 antibody: synthetic peptide directed towards the middle region of human SNAPC2. Synthetic peptide located within the following region: STEEDFAVD FEKIYKYLSSVSRSGRSP ELSAAESAVVLDLLMSLPEELPL
Formulation:	Liquid. Purified antibody supplied in 1x PBS buffer with 0.09% (w/v) sodium azide and 2% sucrose. <i>Note that this product is shipped as lyophilized powder to China customers.</i>
Conjugation:	Unconjugated
Storage:	Store at -20°C as received.
Stability:	Stable for 12 months from date of receipt.
Predicted Protein Size:	36 kDa
Gene Name:	small nuclear RNA activating complex polypeptide 2
Database Link:	NP_003074 Entrez Gene 6618 Human Q13487
Background:	SNAPc is involved in transcription by two types of polymerases; it is required for transcription of both the RNA polymerase II and III small-nuclear RNA genes and binds specifically to the proximal sequence element PSE, a non-TATA-box basal promoter element common to these two types of genes. In addition, SNAPc is composed of at least three TAFs, SNAP43, SNAP45 and SNAP50.
Synonyms:	PTFDELTA; SNAP45
Note:	Immunogen sequence homology: Human: 100%



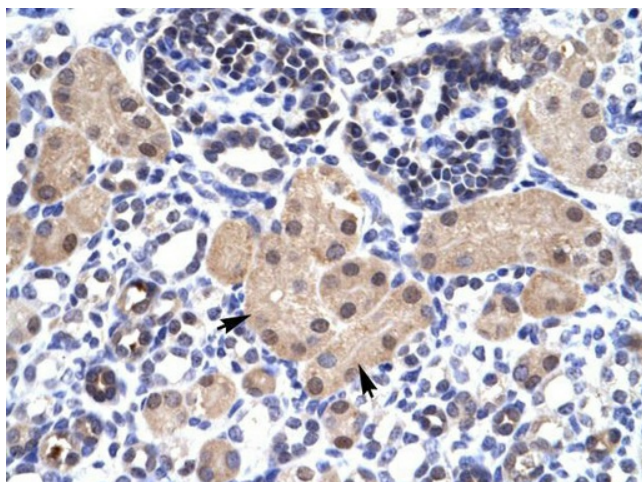
[View online »](#)

Protein Families: Transcription Factors

Product images:



WB Suggested Anti-SNAPC2 Antibody Titration:
1.25 ug/ml; Positive Control: Jurkat cell lysate



Immunohistochemistry with Human kidney
lysate tissue