

Product datasheet for **TA330156**

SNAP45 (SNAPC2) Rabbit Polyclonal Antibody

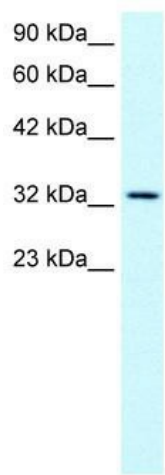
Product data:

Product Type:	Primary Antibodies
Applications:	IHC, WB
Recommended Dilution:	WB, IHC
Reactivity:	Human
Host:	Rabbit
Isotype:	IgG
Clonality:	Polyclonal
Immunogen:	The immunogen for anti-SNAPC2 antibody: synthetic peptide directed towards the middle region of human SNAPC2. Synthetic peptide located within the following region: STEEDFAVDFEKIYKYLSSVSRSGRSPELSAESAVALDLLMSLPEELPL
Formulation:	Liquid. Purified antibody supplied in 1x PBS buffer with 0.09% (w/v) sodium azide and 2% sucrose.
Conjugation:	Unconjugated
Storage:	Store at -20°C as received.
Stability:	Stable for 12 months from date of receipt.
Predicted Protein Size:	35 kDa
Gene Name:	small nuclear RNA activating complex polypeptide 2
Database Link:	NP_003074 Entrez Gene 6618 Human Q13487
Background:	SNAPC2 is a component of the snRNA activating protein complex (SNAPc). SNAPC2 is exceptionally proline-rich, interacts strongly with TBP, and, other SNAPC components, is required for both RNA polymerase II and III transcription of snRNA genes.
Synonyms:	PTFDELTA; SNAP45
Note:	Immunogen sequence homology: Human: 100%
Protein Families:	Transcription Factors

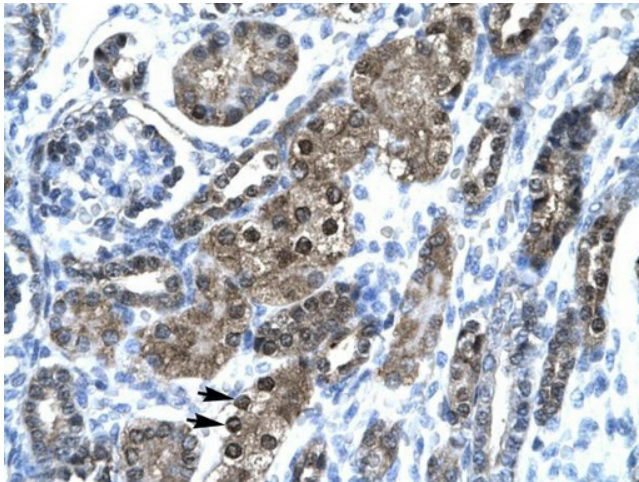


[View online »](#)

Product images:



WB Suggested Anti-SNAPC2 Antibody Titration:
0.2-1 ug/ml; ELISA Titer: 1:1562500; Positive
Control: Jurkat cell lysate



Human kidney