

Product datasheet for **TA330152**

OTX1 Rabbit Polyclonal Antibody

Product data:

Product Type:	Primary Antibodies
Applications:	WB
Recommended Dilution:	WB
Reactivity:	Human
Host:	Rabbit
Isotype:	IgG
Clonality:	Polyclonal
Immunogen:	The immunogen for anti-OTX1 antibody: synthetic peptide directed towards the N terminal of human OTX1. Synthetic peptide located within the following region: KINLPESRVQVWFKNRRRAKCRQQQSGSGTKSRPAKKKSSPVRESSGSES
Formulation:	Liquid. Purified antibody supplied in 1x PBS buffer with 0.09% (w/v) sodium azide and 2% sucrose. <i>Note that this product is shipped as lyophilized powder to China customers.</i>
Conjugation:	Unconjugated
Storage:	Store at -20°C as received.
Stability:	Stable for 12 months from date of receipt.
Predicted Protein Size:	37 kDa
Gene Name:	orthodenticle homeobox 1
Database Link:	NP_055377 Entrez Gene 5013 Human P32242



[View online »](#)

Background:

OTX1 is a member of the bicoid sub-family of homeodomain-containing transcription factors. OTX1 acts as a transcription factor and may play a role in brain and sensory organ development. A similar protein in mice is required for proper brain and sensory organ development and can cause epilepsy. This gene encodes a member of the bicoid sub-family of homeodomain-containing transcription factors. The encoded protein acts as a transcription factor and may play a role in brain and sensory organ development. A similar protein in mice is required for proper brain and sensory organ development and can cause epilepsy. This gene encodes a member of the bicoid sub-family of homeodomain-containing transcription factors. The encoded protein acts as a transcription factor and may play a role in brain and sensory organ development. A similar protein in mice is required for proper brain and sensory organ development and can cause epilepsy.

Synonyms:

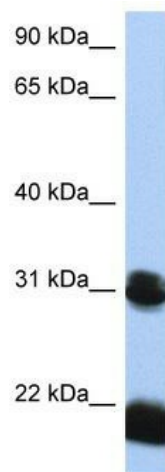
FLJ38361; MGC15736

Note:

Immunogen sequence homology: Bovine: 100%; Dog: 100%; Human: 100%; Guinea pig: 92%; Rat: 85%; Zebrafish: 85%; Mouse: 78%

Protein Families:

Druggable Genome, Transcription Factors

Product images:

WB Suggested Anti-OTX1 Antibody Titration: 0.2-1 ug/ml; Positive Control: HepG2 cell lysate