

Product datasheet for **TA330149**

LMO2 Rabbit Polyclonal Antibody

Product data:

Product Type:	Primary Antibodies
Applications:	WB
Recommended Dilution:	WB
Reactivity:	Human
Host:	Rabbit
Isotype:	IgG
Clonality:	Polyclonal
Immunogen:	The immunogen for anti-LMO2 antibody: synthetic peptide directed towards the N terminal of human LMO2. Synthetic peptide located within the following region: GGGARAPEGVRAPAAGQPRATKGAPPPGTPPPSPMSSAIERKSLDPSEE
Formulation:	Liquid. Purified antibody supplied in 1x PBS buffer with 0.09% (w/v) sodium azide and 2% sucrose. <i>Note that this product is shipped as lyophilized powder to China customers.</i>
Conjugation:	Unconjugated
Storage:	Store at -20°C as received.
Stability:	Stable for 12 months from date of receipt.
Predicted Protein Size:	18 kDa
Gene Name:	LIM domain only 2
Database Link:	NP_005565 Entrez Gene 4005 Human P25791



[View online »](#)

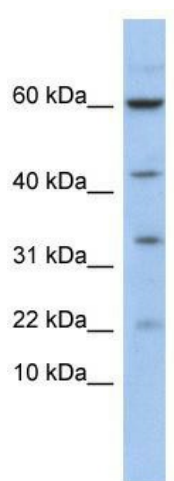
Background: LMO2 acts with TAL1/SCL to regulate red blood cell development. LMO2 also acts with LDB1 to maintain erythroid precursors in an immature state. LMO2 encodes a cysteine-rich, two LIM-domain protein that is required for yolk sac erythropoiesis. The LMO2 protein has a central and crucial role in hematopoietic development and is highly conserved. The LMO2 transcription start site is located approximately 25 kb downstream from the 11p13 T-cell translocation cluster (11p13 ttc), where a number T-cell acute lymphoblastic leukemia-specific translocations occur. Publication Note: This RefSeq record includes a subset of the publications that are available for this gene. Please see the Entrez Gene record to access additional publications.

Synonyms: RBTN2; RBTNL1; RHOM2; TTG2

Note: Immunogen sequence homology: Chicken: 100%; Dog: 100%; Guinea pig: 100%; Mouse: 100%; Pig: 100%; Rabbit: 100%; Rat: 100%

Protein Families: Druggable Genome

Product images:



WB Suggested Anti-LMO2 Antibody Titration: 0.2-1 ug/ml; ELISA Titer: 1:1562500; Positive Control: Human kidney