

Product datasheet for **TA330140**

GTF2H1 Rabbit Polyclonal Antibody

Product data:

| | |
|-------------------------|---|
| Product Type: | Primary Antibodies |
| Applications: | WB |
| Recommended Dilution: | WB |
| Reactivity: | Human, Mouse |
| Host: | Rabbit |
| Isotype: | IgG |
| Clonality: | Polyclonal |
| Immunogen: | The immunogen for anti-GTF2H1 antibody: synthetic peptide directed towards the middle region of human GTF2H1. Synthetic peptide located within the following region: ERFQVTKLCPFQEKIRRQYLSTNLVSHIEEMLQTAYNKLHTWQSRRLMKK |
| Formulation: | Liquid. Purified antibody supplied in 1x PBS buffer with 0.09% (w/v) sodium azide and 2% sucrose. <i>Note that this product is shipped as lyophilized powder to China customers.</i> |
| Conjugation: | Unconjugated |
| Storage: | Store at -20°C as received. |
| Stability: | Stable for 12 months from date of receipt. |
| Predicted Protein Size: | 62 kDa |
| Gene Name: | general transcription factor IIH subunit 1 |
| Database Link: | NP_005307 Entrez Gene 14884 Mouse Entrez Gene 2965 Human P32780 |
| Background: | GTF2H1 is the component of the core-TFIIH basal transcription factor involved in nucleotide excision repair (NER) of DNA and, when complexed to CAK, in RNA transcription by RNA polymerase II. |
| Synonyms: | BTF2; P62; TFB1; TFIIH |
| Note: | Immunogen sequence homology: Bovine: 100%; Chicken: 100%; Dog: 100%; Guinea pig: 100%; Horse: 100%; Human: 100%; Mouse: 100%; Pig: 100%; Rat: 100%; Zebrafish: 92%; African clawed frog: 78% |

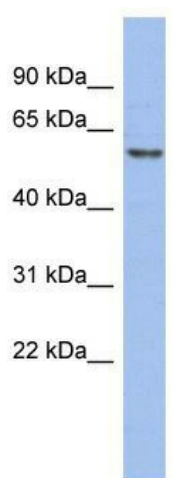


[View online »](#)

Protein Families: Druggable Genome, Transcription Factors

Protein Pathways: Basal transcription factors, Nucleotide excision repair

Product images:



WB Suggested Anti-GTF2H1 Antibody Titration:
0.2-1 ug/ml; ELISA Titer: 1:312500; Positive
Control: ACHN cell lysate GTF2H1 is supported by
BioGPS gene expression data to be expressed in
ACHN