

## Product datasheet for **TA330137**

### **GABPB2 (GABPB1) Rabbit Polyclonal Antibody**

#### **Product data:**

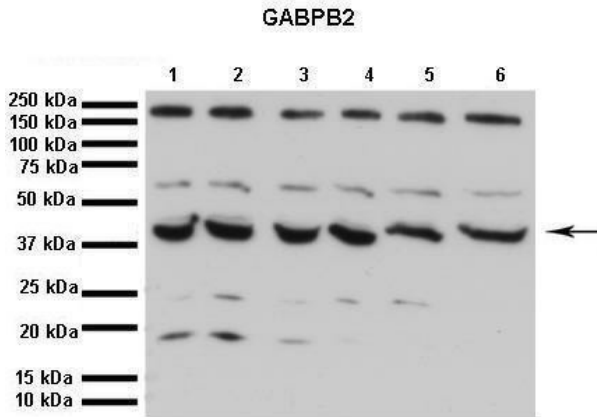
<b>Product Type:</b>	Primary Antibodies
<b>Applications:</b>	IHC, WB
<b>Recommended Dilution:</b>	WB, IHC
<b>Reactivity:</b>	Human
<b>Host:</b>	Rabbit
<b>Isotype:</b>	IgG
<b>Clonality:</b>	Polyclonal
<b>Immunogen:</b>	The immunogen for anti-GABPB2 antibody: synthetic peptide directed towards the C terminal of human GABPB2. Synthetic peptide located within the following region: PDGQQVLTVPATDIAEETVISEEPPAKRQCIEIENRVESAEIEEREALQ
<b>Formulation:</b>	Liquid. Purified antibody supplied in 1x PBS buffer with 0.09% (w/v) sodium azide and 2% sucrose. <i>Note that this product is shipped as lyophilized powder to China customers.</i>
<b>Conjugation:</b>	Unconjugated
<b>Storage:</b>	Store at -20°C as received.
<b>Stability:</b>	Stable for 12 months from date of receipt.
<b>Predicted Protein Size:</b>	42 kDa
<b>Gene Name:</b>	GA binding protein transcription factor beta subunit 1
<b>Database Link:</b>	<a href="#">NP_005245</a> <a href="#">Entrez Gene 2553 Human</a> <a href="#">Q06547</a>
<b>Background:</b>	GABPB2 is the GA-binding protein transcription factor, beta subunit. It forms a tetrameric complex with the alpha subunit, and stimulates transcription of target genes. The encoded protein may be involved in activation of cytochrome oxidase expression and nuclear control of mitochondrial function. The crystal structure of a similar protein in mouse has been resolved as a ternary protein complex.
<b>Synonyms:</b>	BABPB2; E4TF1; E4TF1-47; E4TF1-53; E4TF1B; GABPB; GABPB-1; GABPB2; NRF2B1; NRF2B2
<b>Note:</b>	Immunogen sequence homology: Chicken: 92%



[View online »](#)

Protein Families: Transcription Factors

**Product images:**

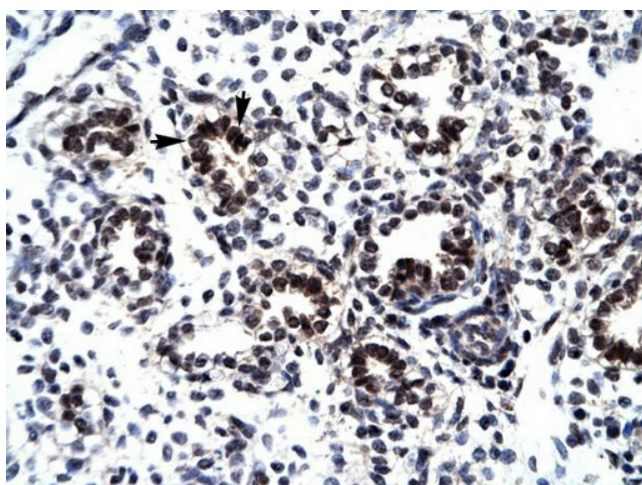


WB Suggested Anti-GABPB2 Antibody Titration: 0.2-1 ug/ml; ELISA Titer: 1:62500; Positive Control: HepG2 cell lysate GABPB1 is supported by BioGPS gene expression data to be expressed in HepG2

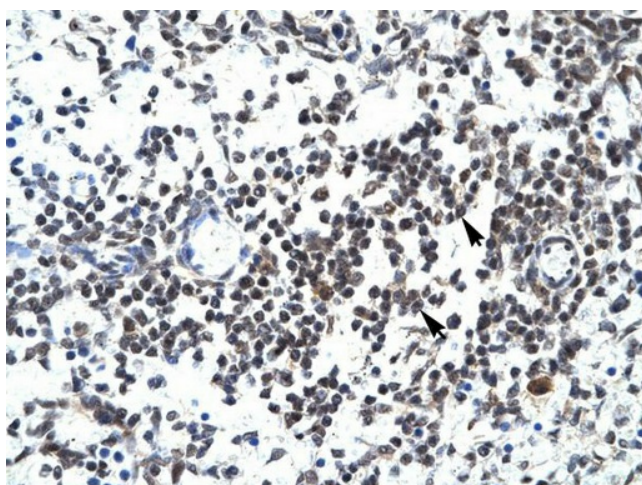
See Immunoblot 2 Data and Customer Feedback for more information



Lanes: 1. 40 ug human HK2 cell (kidney proximal tubular cell line) lysate; 2. 40 ug H2O2 treated human HK2 Cell lysate; 3. 40 ug H2O2 treated human HK2 Cell lysate; 4. 40 ug H2O2 treated human HK2 Cell lysate; 5. 40 ug H2O2 treated human HK2 Cell lysate;



Human Lung



Human Spleen