

Product datasheet for **TA330135**

E2F5 Rabbit Polyclonal Antibody

Product data:

Product Type:	Primary Antibodies
Applications:	WB
Recommended Dilution:	WB
Reactivity:	Human
Host:	Rabbit
Isotype:	IgG
Clonality:	Polyclonal
Immunogen:	The immunogen for anti-E2F5 antibody: synthetic peptide directed towards the N terminal of human E2F5. Synthetic peptide located within the following region: KAEIEDLELKERELDQKLLLQSIKNVMDDSIINRFSYVTHEDICNCFN
Formulation:	Liquid. Purified antibody supplied in 1x PBS buffer with 0.09% (w/v) sodium azide and 2% sucrose. <i>Note that this product is shipped as lyophilized powder to China customers.</i>
Conjugation:	Unconjugated
Storage:	Store at -20°C as received.
Stability:	Stable for 12 months from date of receipt.
Predicted Protein Size:	38 kDa
Gene Name:	E2F transcription factor 5
Database Link:	NP_001942 Entrez Gene 1875 Human Q15329



[View online »](#)

Background:

E2F5 is a member of the E2F family of transcription factors. The E2F family plays a crucial role in the control of cell cycle and action of tumor suppressor proteins and is also a target of the transforming proteins of small DNA tumor viruses. The E2F proteins contain several evolutionally conserved domains found in most members of the family. These domains include a DNA binding domain, a dimerization domain which determines interaction with the differentiation regulated transcription factor proteins (DP), a transactivation domain enriched in acidic amino acids, and a tumor suppressor protein association domain which is embedded within the transactivation domain. This protein is differentially phosphorylated and is expressed in a wide variety of human tissues. It is more homologous to E2F4, a family member, than to other members. Both this protein and E2F4 interact with tumor suppressor proteins p130 and p107, but not with pRB.

Synonyms:

E2F-5

Note:

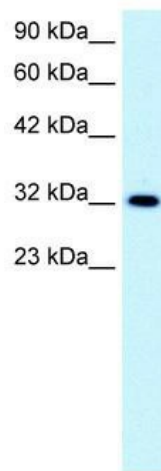
Immunogen sequence homology: Dog: 100%; Guinea pig: 100%; Human: 100%; Mouse: 100%; Pig: 100%; Rabbit: 100%; Rat: 100%; Chicken: 92%; Zebrafish: 84%

Protein Families:

Druggable Genome, Transcription Factors

Protein Pathways:

Cell cycle, TGF-beta signaling pathway

Product images:

WB Suggested Anti-E2F5 Antibody Titration: 0.2-1 ug/ml; Positive Control: Jurkat cell lysate