

Product datasheet for **TA330134**

DBPA (YBX3) Rabbit Polyclonal Antibody

Product data:

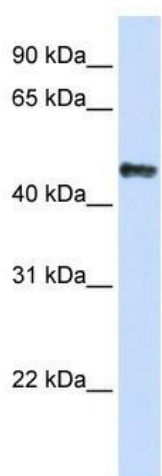
Product Type:	Primary Antibodies
Applications:	WB
Recommended Dilution:	WB
Reactivity:	Human
Host:	Rabbit
Isotype:	IgG
Clonality:	Polyclonal
Immunogen:	The immunogen for anti-CSDA antibody: synthetic peptide directed towards the C terminal of human CSDA. Synthetic peptide located within the following region: GPPRRPAPAVGAEADKENQQATSGPNQPSVRRGYRRPYNRRRPPNA
Formulation:	Liquid. Purified antibody supplied in 1x PBS buffer with 0.09% (w/v) sodium azide and 2% sucrose. <i>Note that this product is shipped as lyophilized powder to China customers.</i>
Conjugation:	Unconjugated
Storage:	Store at -20°C as received.
Stability:	Stable for 12 months from date of receipt.
Predicted Protein Size:	40 kDa
Gene Name:	Y-box binding protein 3
Database Link:	NP_003642 Entrez Gene 8531 Human P16989
Background:	Human DNA-binding protein (dbpA) is a member of a Y-box binding protein family containing a cold shock domain. The increased expression of Y box binding proteins in somatic cells is associated with cell proliferation and transformation.
Synonyms:	CSDA; CSDA1; DBPA; ZONAB
Note:	Immunogen sequence homology: Bovine: 100%; Dog: 100%; Horse: 100%; Human: 100%; Pig: 100%; Rabbit: 100%; Guinea pig: 91%; Mouse: 91%; Rat: 91%
Protein Families:	Transcription Factors



[View online >](#)

Protein Pathways: Tight junction

Product images:



Host: Rabbit; Target Name: CSDA; Sample Tissue: 239T lysates; Antibody Dilution: 1.0ug/ml; YBX3 is strongly supported by BioGPS gene expression data to be expressed in Human HEK293T cells