

Product datasheet for **TA330130**

c-Jun (JUN) Rabbit Polyclonal Antibody

Product data:

Product Type:	Primary Antibodies
Applications:	IHC, WB
Recommended Dilution:	WB, IHC, ChIP
Reactivity:	Human
Host:	Rabbit
Isotype:	IgG
Clonality:	Polyclonal
Immunogen:	The immunogen for anti-JUN antibody: synthetic peptide directed towards the N terminal of human JUN. Synthetic peptide located within the following region: TAKMETTFYDDALNASFLPSESGPYGYSNPKILKQSM TLNLADPVGSLKP
Formulation:	Liquid. Purified antibody supplied in 1x PBS buffer with 0.09% (w/v) sodium azide and 2% sucrose. <i>Note that this product is shipped as lyophilized powder to China customers.</i>
Conjugation:	Unconjugated
Storage:	Store at -20°C as received.
Stability:	Stable for 12 months from date of receipt.
Predicted Protein Size:	36 kDa
Gene Name:	Jun proto-oncogene, AP-1 transcription factor subunit
Database Link:	NP_002219 Entrez Gene 3725 Human P05412



[View online »](#)

Background:

JUN gene is the putative transforming gene of avian sarcoma virus 17. JUN is highly similar to the viral protein, and interacts directly with specific target DNA sequences to regulate gene expression. JUN gene is intronless and is mapped to 1p32-p31, a chromosomal region involved in both translocations and deletions in human malignancies. This gene is the putative transforming gene of avian sarcoma virus 17. It encodes a protein which is highly similar to the viral protein, and which interacts directly with specific target DNA sequences to regulate gene expression. This gene is intronless and is mapped to 1p32-p31, a chromosomal region involved in both translocations and deletions in human malignancies. This gene is the putative transforming gene of avian sarcoma virus 17. It encodes a protein which is highly similar to the viral protein, and which interacts directly with specific target DNA sequences to regulate gene expression. This gene is intronless and is mapped to 1p32-p31, a chromosomal region involved in both translocations and deletions in human malignancies. Publication Note: This RefSeq record includes a subset of the publications that are available for this gene. Please see the Entrez Gene record to access additional publications.

Synonyms:

AP-1; AP1; c-Jun

Note:

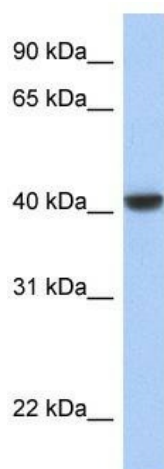
Immunogen sequence homology: Human: 100%; Bovine: 92%; Dog: 92%; Mouse: 92%; Pig: 92%; Rabbit: 92%; Rat: 92%; Sheep: 92%

Protein Families:

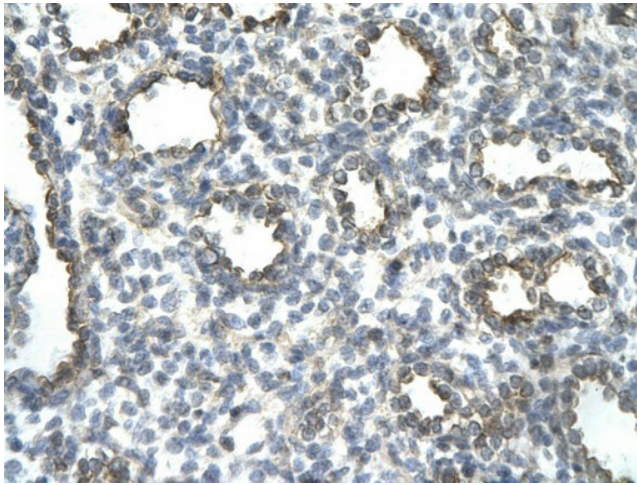
Druggable Genome, ES Cell Differentiation/IPS, Transcription Factors

Protein Pathways:

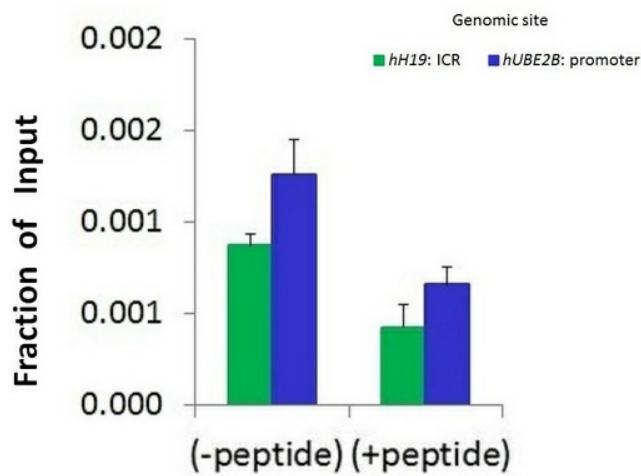
B cell receptor signaling pathway, Colorectal cancer, Epithelial cell signaling in Helicobacter pylori infection, ErbB signaling pathway, Focal adhesion, GnRH signaling pathway, MAPK signaling pathway, Neurotrophin signaling pathway, Pathways in cancer, Renal cell carcinoma, T cell receptor signaling pathway, Toll-like receptor signaling pathway, Wnt signaling pathway

Product images:

WB Suggested Anti-JUN Antibody Titration: 0.2-1 ug/ml; Positive Control: Transfected 293TJUN is strongly supported by BioGPS gene expression data to be expressed in Human HEK293T cells



Rabbit Anti-JUN Antibody; Catalog Number: P100911; Paraffin Embedded Tissue: Human alveolar cell; Cellular Data: Epithelial cells of renal tubule; Antibody Concentration: 4.0-8.0 ug/ml; Magnification: 400X



Chromatin Immunoprecipitation (ChIP) Using JUN antibody - N-terminal region (P100911_P050) and HCT116 Cells