

## Product datasheet for **TA330126**

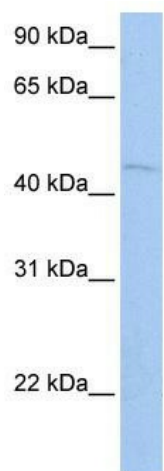
### ZBTB6 Rabbit Polyclonal Antibody

#### Product data:

Product Type:	Primary Antibodies
Applications:	WB
Recommended Dilution:	WB
Reactivity:	Human
Host:	Rabbit
Isotype:	IgG
Clonality:	Polyclonal
Immunogen:	The immunogen for anti-ZBTB6 antibody: synthetic peptide directed towards the N terminal of human ZBTB6. Synthetic peptide located within the following region: SDPDVKNEDENSDKDCEIIEISEDSPVNIDFHVKEEESNALQSTVESLTS
Formulation:	Liquid. Purified antibody supplied in 1x PBS buffer with 0.09% (w/v) sodium azide and 2% sucrose. <i>Note that this product is shipped as lyophilized powder to China customers.</i>
Conjugation:	Unconjugated
Storage:	Store at -20°C as received.
Stability:	Stable for 12 months from date of receipt.
Predicted Protein Size:	48 kDa
Gene Name:	zinc finger and BTB domain containing 6
Database Link:	<a href="#">NP_006617</a> <a href="#">Entrez Gene 10773 Human</a> <a href="#">Q15916</a>
Background:	ZBTB6 contains 1 BTB (POZ) domain and 4 C2H2-type zinc fingers. ZBTB6 may be involved in transcriptional regulation.
Synonyms:	ZID; ZNF482
Note:	Immunogen sequence homology: Human: 100%; Mouse: 100%; Bovine: 92%; Horse: 92%; Pig: 92%
Protein Families:	Transcription Factors



[View online »](#)

**Product images:**


WB Suggested Anti-ZBTB6 Antibody Titration: 0.2-1 ug/ml; Positive Control: NTERA2 cell lysate