

Product datasheet for **TA330124**

YY1 Rabbit Polyclonal Antibody

Product data:

Product Type:	Primary Antibodies
Applications:	IHC, WB
Recommended Dilution:	WB, IHC
Reactivity:	Human
Host:	Rabbit
Isotype:	IgG
Clonality:	Polyclonal
Immunogen:	The immunogen for anti-YY1 antibody: synthetic peptide directed towards the middle region of human YY1. Synthetic peptide located within the following region: KQLAEFARMKPRKIKEDDAPRTIACPHKGCTKMFRDNSAMRKHLHTHGPR
Formulation:	Liquid. Purified antibody supplied in 1x PBS buffer with 0.09% (w/v) sodium azide and 2% sucrose. <i>Note that this product is shipped as lyophilized powder to China customers.</i>
Conjugation:	Unconjugated
Storage:	Store at -20°C as received.
Stability:	Stable for 12 months from date of receipt.
Predicted Protein Size:	45 kDa
Gene Name:	YY1 transcription factor
Database Link:	NP_003394 Entrez Gene 7528 Human P25490
Background:	YY1 is a ubiquitously distributed transcription factor belonging to the GLI-Kruppel class of zinc finger proteins. The protein is involved in repressing and activating a diverse number of promoters. YY1 may direct histone deacetylases and histone acetyltransferases to a promoter in order to activate or repress the promoter, thus implicating histone modification in the function of YY1.
Synonyms:	DELTA; INO80S; NF-E1; UCRBP; YIN-YANG-1

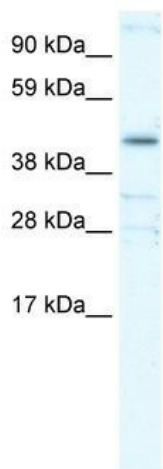


[View online »](#)

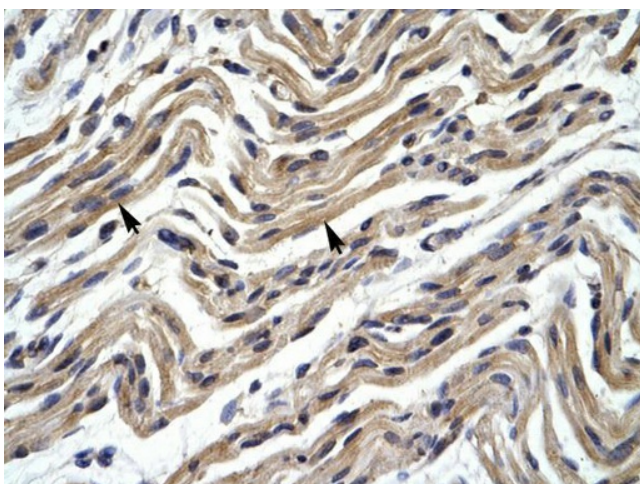
Note: Immunogen sequence homology: African clawed frog: 100%; Bovine: 100%; Chicken: 100%; Dog: 100%; Human: 100%; Mouse: 100%; Rat: 100%; Zebrafish: 92%

Protein Families: Druggable Genome, Transcription Factors

Product images:



WB Suggested Anti-YY1 Antibody Titration: 0.2-1 ug/ml; Positive Control: Human Thymus



Human Muscle