

Product datasheet for **TA330119**

TFIIE alpha (GTF2E1) Rabbit Polyclonal Antibody

Product data:

Product Type:	Primary Antibodies
Applications:	IHC, WB
Recommended Dilution:	WB, IHC
Reactivity:	Human
Host:	Rabbit
Isotype:	IgG
Clonality:	Polyclonal
Immunogen:	The immunogen for anti-GTF2E1 antibody: synthetic peptide directed towards the C terminal of human GTF2E1. Synthetic peptide located within the following region: VADDPIVMVAGRPFYSYSEVSQRPELVAQMTPEEKEAYIAMGQRMFEDLFE
Formulation:	Liquid. Purified antibody supplied in 1x PBS buffer with 0.09% (w/v) sodium azide and 2% sucrose. <i>Note that this product is shipped as lyophilized powder to China customers.</i>
Conjugation:	Unconjugated
Storage:	Store at -20°C as received.
Stability:	Stable for 12 months from date of receipt.
Predicted Protein Size:	49 kDa
Gene Name:	general transcription factor IIE subunit 1
Database Link:	NP_005504 Entrez Gene 2960 Human P29083



[View online »](#)

Background: The general transcription factor TFIIE has an essential role in eukaryotic transcription initiation together with RNA polymerase II and other general factors. Human TFIIE consists of two subunits of relative molecular mass 57,000 (TFIIE-alpha) and 34,000 (TFIIE-beta) and joins the preinitiation complex after RNA polymerase II and TFIIF. TFIIE-alpha is necessary for transcription initiation together with TFIIE-beta, and recombinant TFIIE-alpha can fully replace the natural subunit in an in vitro transcription assay. Its sequence contains several interesting structural motifs (leucine repeat, zinc finger and helix-turn-helix) and sequence similarities to bacterial sigma factors that suggest direct involvement in the regulation of transcription initiation

Synonyms: FE; TF2E1; TFIIE-A

Note: Immunogen sequence homology: Bovine: 100%; Dog: 100%; Guinea pig: 100%; Horse: 100%; Mouse: 100%; Rabbit: 100%; Rat: 100%; Chicken: 92%; African clawed frog: 85%

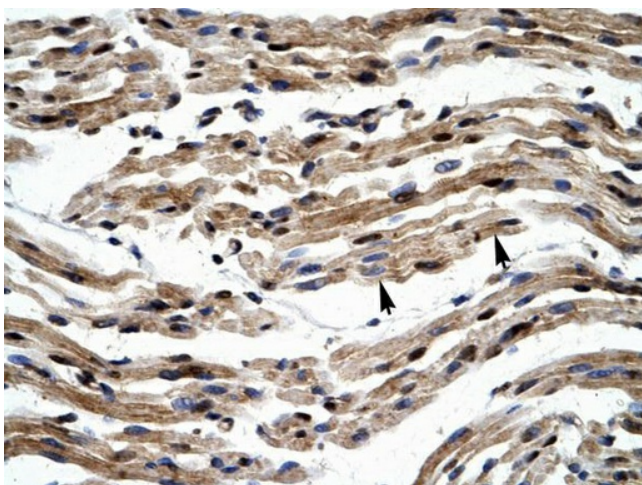
Protein Families: Transcription Factors

Protein Pathways: Basal transcription factors

Product images:



WB Suggested Anti-GTF2E1 Antibody Titration:
0.2-1 ug/ml; Positive Control: Daudi cell lysate



Human Muscle