

Product datasheet for **TA330118**

TEF1 (TEAD1) Rabbit Polyclonal Antibody

Product data:

Product Type:	Primary Antibodies
Applications:	WB
Recommended Dilution:	WB
Reactivity:	Human
Host:	Rabbit
Isotype:	IgG
Clonality:	Polyclonal
Immunogen:	The immunogen for anti-TEAD1 antibody: synthetic peptide directed towards the N terminal of human TEAD1. Synthetic peptide located within the following region: MEPSSWSGSESPAENMERMDSADKPIDNDAEGVWSPDIEQSFQEALAIY
Formulation:	Liquid. Purified antibody supplied in 1x PBS buffer with 0.09% (w/v) sodium azide and 2% sucrose. <i>Note that this product is shipped as lyophilized powder to China customers.</i>
Conjugation:	Unconjugated
Storage:	Store at -20°C as received.
Stability:	Stable for 12 months from date of receipt.
Predicted Protein Size:	46 kDa
Gene Name:	TEA domain transcription factor 1
Database Link:	NP_068780 Entrez Gene 7003 Human P28347
Background:	This gene encodes a ubiquitous transcriptional enhancer factor that is a member of the TEA/ATTS domain family. This protein directs the transactivation of a wide variety of genes and, in placental cells, also acts as a transcriptional repressor. Mutations in this gene cause Sveinsson's chorioretinal atrophy. Additional transcript variants have been described but their full-length natures have not been experimentally verified. [provided by RefSeq, May 2010]
Synonyms:	AA; NTEF-1; REF1; TCF-13; TCF13; TEAD-1; TEF-1

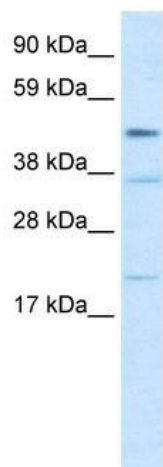


[View online »](#)

Note: Immunogen sequence homology: Human: 100%; Mouse: 100%; Rabbit: 100%; Rat: 92%; Chicken: 85%

Protein Families: Transcription Factors

Product images:



WB Suggested Anti-TEAD1 Antibody Titration:
2.5ug/ml; Positive Control: Human Muscle