

## Product datasheet for **TA330116**

### LEF1 Rabbit Polyclonal Antibody

#### Product data:

Product Type:	Primary Antibodies
Applications:	WB
Recommended Dilution:	WB
Reactivity:	Human
Host:	Rabbit
Isotype:	IgG
Clonality:	Polyclonal
Immunogen:	The immunogen for anti-LEF1 antibody: synthetic peptide directed towards the N terminal of human LEF1. Synthetic peptide located within the following region: VARQAQTSQEPYHDKAREHPDDGKHPDGGLYNKGPSYSSYSGYIMMPNMN
Formulation:	Liquid. Purified antibody supplied in 1x PBS buffer with 0.09% (w/v) sodium azide and 2% sucrose. <i>Note that this product is shipped as lyophilized powder to China customers.</i>
Conjugation:	Unconjugated
Storage:	Store at -20°C as received.
Stability:	Stable for 12 months from date of receipt.
Predicted Protein Size:	44 kDa
Gene Name:	lymphoid enhancer binding factor 1
Database Link:	<a href="#">NP_057353</a> <a href="#">Entrez Gene 51176 Human</a> <a href="#">Q9UJU2</a>



[View online »](#)

**Background:**

Lymphoid enhancer-binding factor-1 (LEF1) is a 48-kD nuclear protein that is expressed in pre-B and T cells. It binds to a functionally important site in the T-cell receptor-alpha (TCRA) enhancer and confers maximal enhancer activity. LEF1 belongs to a family of regulatory proteins that share homology with high mobility group protein-1 (HMG1). Lymphoid enhancer-binding factor-1 (LEF1) is a 48-kD nuclear protein that is expressed in pre-B and T cells. It binds to a functionally important site in the T-cell receptor-alpha (TCRA; MIM 186880) enhancer and confers maximal enhancer activity. LEF1 belongs to a family of regulatory proteins that share homology with high mobility group protein-1 (HMG1; MIM 163905). [supplied by OMIM]. Publication Note: This RefSeq record includes a subset of the publications that are available for this gene. Please see the Entrez Gene record to access additional publications.

**Synonyms:**

LEF-1; TCF1ALPHA; TCF7L3; TCF10

**Note:**

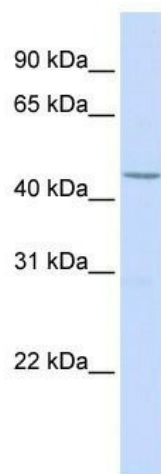
Immunogen sequence homology: Horse: 100%; Human: 100%; Bovine: 92%; Dog: 92%; Rat: 92%; Guinea pig: 85%; Mouse: 85%; Pig: 85%

**Protein Families:**

Adult stem cells, Druggable Genome, ES Cell Differentiation/IPS, Transcription Factors

**Protein Pathways:**

Acute myeloid leukemia, Adherens junction, Arrhythmogenic right ventricular cardiomyopathy (ARVC), Basal cell carcinoma, Colorectal cancer, Endometrial cancer, Melanogenesis, Pathways in cancer, Prostate cancer, Thyroid cancer, Wnt signaling pathway

**Product images:**

WB Suggested Anti-LEF1 Antibody Titration: 0.2-1 ug/ml; ELISA Titer: 1:312500; Positive Control: HeLa cell lysate