

Product datasheet for **TA330114**

SNAP43 (SNAPC1) Rabbit Polyclonal Antibody

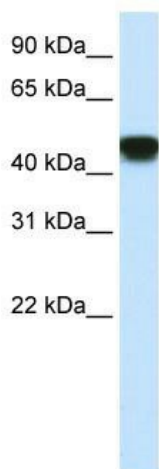
Product data:

Product Type:	Primary Antibodies
Applications:	IHC, WB
Recommended Dilution:	WB, IHC
Reactivity:	Human
Host:	Rabbit
Isotype:	IgG
Clonality:	Polyclonal
Immunogen:	The immunogen for anti-SNAPC1 antibody: synthetic peptide directed towards the C terminal of human SNAPC1. Synthetic peptide located within the following region: KMSLRNKGNVQNIHKEDKPLSLSPVITEEEEENESLSGTEFTASKKRRKH
Formulation:	Liquid. Purified antibody supplied in 1x PBS buffer with 0.09% (w/v) sodium azide and 2% sucrose. <i>Note that this product is shipped as lyophilized powder to China customers.</i>
Conjugation:	Unconjugated
Storage:	Store at -20°C as received.
Stability:	Stable for 12 months from date of receipt.
Predicted Protein Size:	43 kDa
Gene Name:	small nuclear RNA activating complex polypeptide 1
Database Link:	NP_003073 Entrez Gene 6617 Human Q16533
Background:	SNAPC1 is a part of the SNAPc complex required for the transcription of both RNA polymerase II and III small-nuclear RNA genes. It binds to the proximal sequence element (PSE), a non-TATA-box basal promoter element common to these 2 types of genes and recruits TBP and BRF2 to the U6 snRNA TATA box.
Synonyms:	PTFgamma; SNAP43
Note:	Immunogen sequence homology: Human: 100%
Protein Families:	Transcription Factors

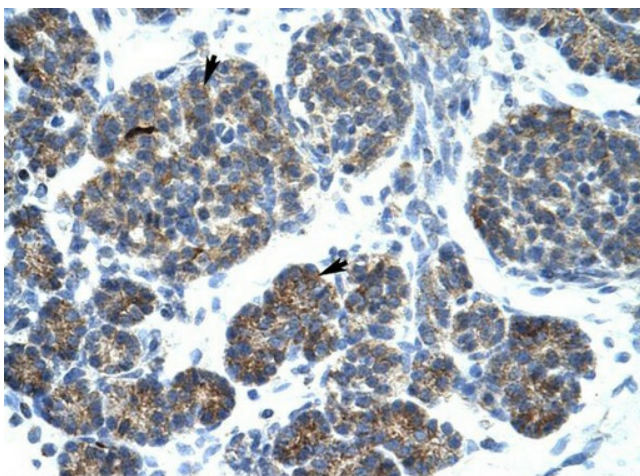


[View online »](#)

Product images:



WB Suggested Anti-SNAPC1 Antibody Titration: 2.5ug/ml; Positive Control: Transfected 293T



Human Pancrease

Rabbit Anti-SNAPC1 Antibody