

Product datasheet for **TA330113**

LHX2 Rabbit Polyclonal Antibody

Product data:

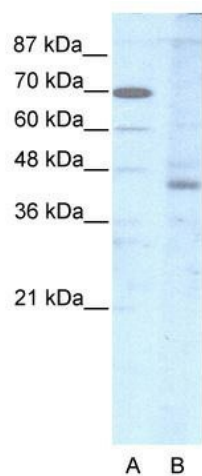
| | |
|-------------------------|---|
| Product Type: | Primary Antibodies |
| Applications: | WB |
| Recommended Dilution: | WB |
| Reactivity: | Human |
| Host: | Rabbit |
| Isotype: | IgG |
| Clonality: | Polyclonal |
| Immunogen: | The immunogen for anti-LHX2 antibody: synthetic peptide directed towards the middle region of human LHX2. Synthetic peptide located within the following region: AEHLDRDQYPSSQKTKRMRTSFKHHQLRTMKSYFAINHNPDAKDLKQLA |
| Formulation: | Liquid. Purified antibody supplied in 1x PBS buffer with 0.09% (w/v) sodium azide and 2% sucrose. <i>Note that this product is shipped as lyophilized powder to China customers.</i> |
| Conjugation: | Unconjugated |
| Storage: | Store at -20°C as received. |
| Stability: | Stable for 12 months from date of receipt. |
| Predicted Protein Size: | 44 kDa |
| Gene Name: | LIM homeobox 2 |
| Database Link: | NP_004780 Entrez Gene 9355 Human P50458 |
| Background: | LHX2 is a protein belonging to a large protein family, members of which carry the LIM domain, a unique cysteine-rich zinc-binding domain. The encoded protein may function as a transcriptional regulator. The protein can recapitulate or rescue phenotypes in Drosophila caused by a related protein, suggesting conservation of function during evolution. |
| Synonyms: | hLhx2; LH2 |
| Note: | Immunogen sequence homology: Bovine: 100%; Dog: 100%; Guinea pig: 100%; Human: 100%; Mouse: 100%; Pig: 100%; Rabbit: 100%; Rat: 100%; Chicken: 85% |



[View online »](#)

Protein Families: Transcription Factors

Product images:



WB Suggested Anti-LHX2 Antibody Titration:
2.5ug/ml; ELISA Titer: 1:312500; Positive Control:
HepG2 cell lysate