

Product datasheet for **TA330112**

FLI1 Rabbit Polyclonal Antibody

Product data:

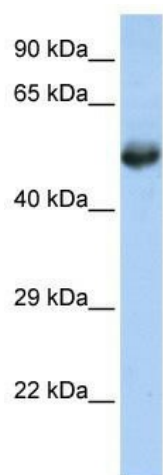
Product Type:	Primary Antibodies
Applications:	IHC, WB
Recommended Dilution:	WB, IHC
Reactivity:	Human
Host:	Rabbit
Isotype:	IgG
Clonality:	Polyclonal
Immunogen:	The immunogen for anti-FLI1 antibody: synthetic peptide directed towards the middle region of human FLI1. Synthetic peptide located within the following region: FDFHGIAQALQPHPTESSMYKYPDISYMPYHAHQKVNFPVPPHPSSMP
Formulation:	Liquid. Purified antibody supplied in 1x PBS buffer with 0.09% (w/v) sodium azide and 2% sucrose. <i>Note that this product is shipped as lyophilized powder to China customers.</i>
Conjugation:	Unconjugated
Storage:	Store at -20°C as received.
Stability:	Stable for 12 months from date of receipt.
Predicted Protein Size:	51 kDa
Gene Name:	Fli-1 proto-oncogene, ETS transcription factor
Database Link:	NP_002008 Entrez Gene 2313 Human Q01543
Background:	Friend leukemia integration 1 (Fli-1) is a member of the ETS family of transcriptional regulatory proteins that contain a highly conserved and structurally unique DNA binding ETS domain.
Synonyms:	EWSR2; SIC-1
Note:	Immunogen sequence homology: Bovine: 100%; Chicken: 100%; Dog: 100%; Guinea pig: 100%; Human: 100%; Rabbit: 100%; Mouse: 92%; Rat: 92%; Zebrafish: 92%; African clawed frog: 85%; Horse: 85%



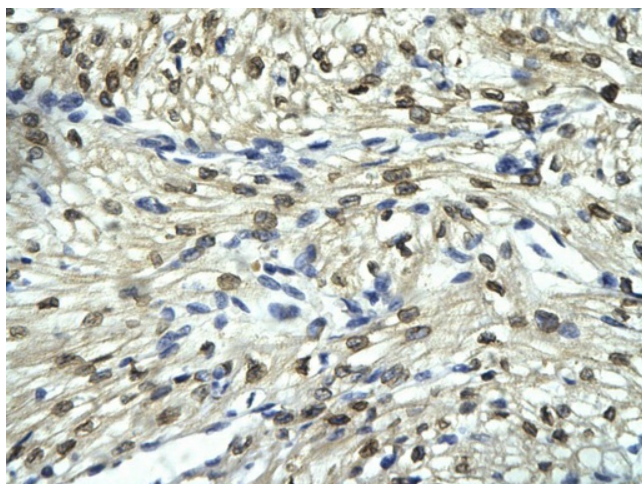
[View online »](#)

Protein Families: Transcription Factors

Product images:



WB Suggested Anti-FLI1 Antibody Titration: 0.2-1 ug/ml; ELISA Titer: 1:312500; Positive Control: Jurkat cell lysate. FLI1 is strongly supported by BioGPS gene expression data to be expressed in Human Jurkat cells



Rabbit Anti-FLI1 Antibody; Paraffin Embedded Tissue: Human cardiac cell; Cellular Data: Epithelial cells of renal tubule; Antibody Concentration: 4.0-8.0 ug/ml; Magnification: 400X