

Product datasheet for **TA330111**

EGR2 Rabbit Polyclonal Antibody

Product data:

| | |
|-------------------------|--|
| Product Type: | Primary Antibodies |
| Applications: | IHC, WB |
| Recommended Dilution: | WB, IHC |
| Reactivity: | Human, Mouse, Rat |
| Host: | Rabbit |
| Isotype: | IgG |
| Clonality: | Polyclonal |
| Immunogen: | The immunogen for anti-EGR2 antibody: synthetic peptide directed towards the C terminal of human EGR2. Synthetic peptide located within the following region: PFACDYCGRKFFARSDERKRHTKIHLRQKERKSSAPSASVPAPSTASCSGG |
| Formulation: | Liquid. Purified antibody supplied in 1x PBS buffer with 0.09% (w/v) sodium azide and 2% sucrose. <i>Note that this product is shipped as lyophilized powder to China customers.</i> |
| Conjugation: | Unconjugated |
| Storage: | Store at -20°C as received. |
| Stability: | Stable for 12 months from date of receipt. |
| Predicted Protein Size: | 50 kDa |
| Gene Name: | early growth response 2 |
| Database Link: | NP_000390 Entrez Gene 13654 Mouse Entrez Gene 114090 Rat Entrez Gene 1959 Human P11161 |
| Background: | The early growth response protein 2 (EGR2) is a transcription factor with three tandem C2H2-type zinc fingers. Mutations in this gene are associated with the autosomal dominant Charcot-Marie-Tooth disease, type 1. The early growth response protein 2 is a transcription factor with three tandem C2H2-type zinc fingers. Mutations in this gene are associated with the autosomal dominant Charcot-Marie-Tooth disease, type 1. Publication Note: This RefSeq record includes a subset of the publications that are available for this gene. Please see the Entrez Gene record to access additional publications. |



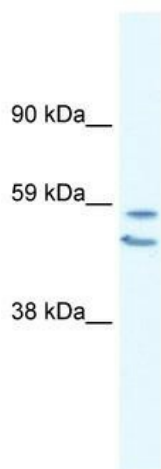
[View online »](#)

Synonyms: AT591; CMT1D; CMT4E; KROX20

Note: Immunogen sequence homology: Bovine: 100%; Human: 100%; Mouse: 100%; Dog: 92%; Pig: 92%; Rabbit: 92%; Rat: 92%; Horse: 85%

Protein Families: Druggable Genome, Transcription Factors

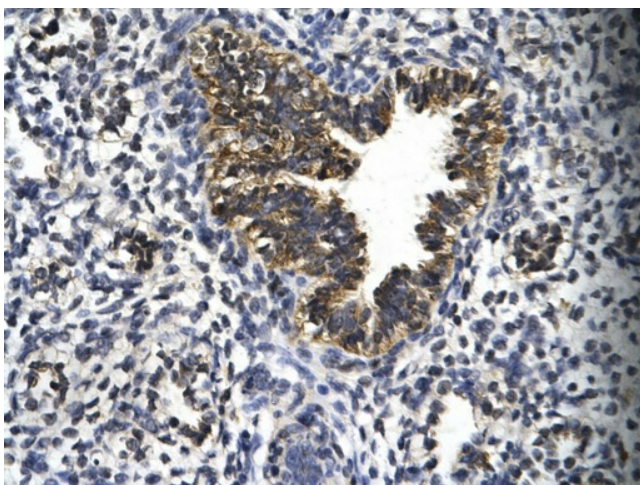
Product images:



WB Suggested Anti-EGR2 Antibody Titration: 0.2-1 ug/ml; ELISA Titer: 1:312500; Positive Control: Human Lung



Human Intestine



Rabbit Anti-EGR2 Antibody; Paraffin Embedded Tissue: Human bronchiole epithelium; Cellular Data: Epithelial cells of renal tubule; Antibody Concentration: 4.0-8.0 ug/ml; Magnification: 400X