

## Product datasheet for **TA330107**

### E74 like factor 1 (ELF1) Rabbit Polyclonal Antibody

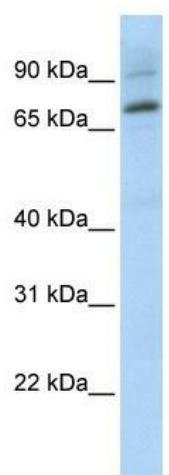
#### Product data:

Product Type:	Primary Antibodies
Applications:	WB
Recommended Dilution:	WB
Reactivity:	Human
Host:	Rabbit
Isotype:	IgG
Clonality:	Polyclonal
Immunogen:	The immunogen for anti-ELF1 antibody: synthetic peptide directed towards the middle region of human ELF1. Synthetic peptide located within the following region: RSSQLVAHPPGTVITSVIKTQETKTLTQEVEKKESEDHLKENTEKTEQQP
Formulation:	Liquid. Purified antibody supplied in 1x PBS buffer with 0.09% (w/v) sodium azide and 2% sucrose. <i>Note that this product is shipped as lyophilized powder to China customers.</i>
Conjugation:	Unconjugated
Storage:	Store at -20°C as received.
Stability:	Stable for 12 months from date of receipt.
Predicted Protein Size:	67 kDa
Gene Name:	E74 like ETS transcription factor 1
Database Link:	<a href="#">NP_758961</a> <a href="#">Entrez Gene 1997 Human P32519</a>
Background:	This protein is an E26 transformation-specific related transcription factor. The protein is primarily expressed in lymphoid cells and acts as both an enhancer and a repressor to regulate transcription of various genes.
Synonyms:	E74-like factor 1 (ets domain transcription factor); OTTHUMP00000018310
Note:	Immunogen sequence homology: Human: 100%; Rabbit: 85%; Horse: 78%
Protein Families:	Transcription Factors



[View online »](#)

## Product images:



WB Suggested Anti-ELF1 Antibody Titration: 0.2-1 ug/ml; ELISA Titer: 1:12500; Positive Control: Transfected 293T