

Product datasheet for **TA330103**

TFIIE alpha (GTF2E1) Rabbit Polyclonal Antibody

Product data:

Product Type:	Primary Antibodies
Applications:	WB
Recommended Dilution:	WB
Reactivity:	Human
Host:	Rabbit
Isotype:	IgG
Clonality:	Polyclonal
Immunogen:	The immunogen for anti-GTF2E1 antibody: synthetic peptide directed towards the N terminal of human GTF2E1. Synthetic peptide located within the following region: DHMRRRIETDERDSTNRASFKCPVCSSTFTDLEANQLFDPMTGTFRCTFC
Formulation:	Liquid. Purified antibody supplied in 1x PBS buffer with 0.09% (w/v) sodium azide and 2% sucrose. <i>Note that this product is shipped as lyophilized powder to China customers.</i>
Conjugation:	Unconjugated
Storage:	Store at -20°C as received.
Stability:	Stable for 12 months from date of receipt.
Predicted Protein Size:	49 kDa
Gene Name:	general transcription factor IIE subunit 1
Database Link:	NP_005504 Entrez Gene 2960 Human P29083
Background:	GTF2E1 belongs to the TFIIE alpha subunit family. It recruits TFIIH to the initiation complex and stimulates the RNA polymerase II C-terminal domain kinase and DNA-dependent ATPase activities of TFIIH. Both TFIIH and TFIIE are required for promoter clearance by RNA polymerase.
Synonyms:	FE; TF2E1; TFIIE-A



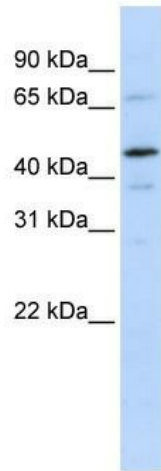
[View online »](#)

Note: Immunogen sequence homology: African clawed frog: 100%; Bovine: 100%; Chicken: 100%; Dog: 100%; Guinea pig: 100%; Horse: 100%; Human: 100%; Rabbit: 100%; Zebrafish: 100%; Mouse: 92%; Rat: 92%

Protein Families: Transcription Factors

Protein Pathways: Basal transcription factors

Product images:



WB Suggested Anti-GTF2E1 Antibody Titration:
0.2-1 ug/ml; ELISA Titer: 1:312500; Positive
Control: 721_B cell lysate GTF2E1 is supported by
BioGPS gene expression data to be expressed in
721_B