

Product datasheet for **TA330102**

PAX2 Rabbit Polyclonal Antibody

Product data:

Product Type:	Primary Antibodies
Applications:	IHC, WB
Recommended Dilution:	WB, IHC
Reactivity:	Human
Host:	Rabbit
Isotype:	IgG
Clonality:	Polyclonal
Immunogen:	The immunogen for anti-PAX2 antibody: synthetic peptide directed towards the middle region of human PAX2. Synthetic peptide located within the following region: VSSASNDPVGYSINGILGIPRSNGEKRRKREDEDVSEGSVPNGDSQSGVDS
Formulation:	Liquid. Purified antibody supplied in 1x PBS buffer with 0.09% (w/v) sodium azide and 2% sucrose. <i>Note that this product is shipped as lyophilized powder to China customers.</i>
Conjugation:	Unconjugated
Storage:	Store at -20°C as received.
Stability:	Stable for 12 months from date of receipt.
Predicted Protein Size:	45 kDa
Gene Name:	paired box 2
Database Link:	NP_003979 Entrez Gene 5076 Human Q02962
Background:	PAX2 encodes paired box gene 2, one of many human homologues of the Drosophila melanogaster gene prd. The central feature of this transcription factor gene family is the conserved DNA-binding paired box domain. PAX2 is believed to be a target of transcriptional suppression by the tumor suppressor gene WT1. Mutations within PAX2 have been shown to result in optic nerve colobomas and renal hypoplasia.
Synonyms:	FSGS7; PAPRS

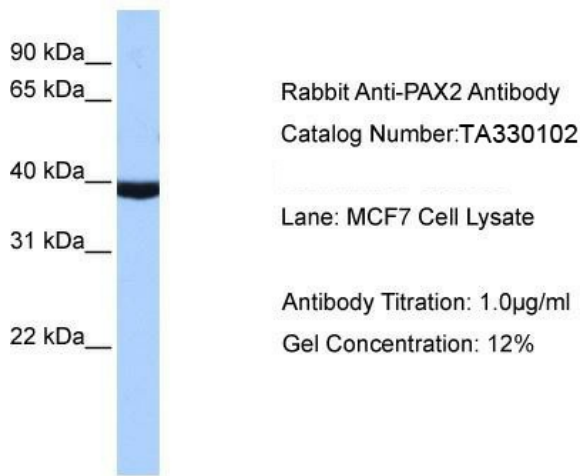


[View online »](#)

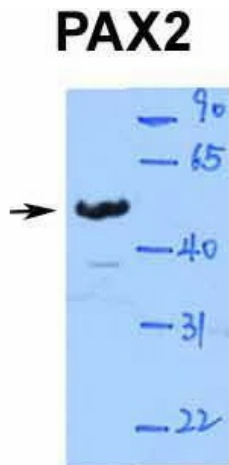
Note: Immunogen sequence homology: Bovine: 100%; Chicken: 100%; Dog: 100%; Guinea pig: 100%; Human: 100%; Pig: 100%; Rabbit: 100%; Sheep: 100%; Zebrafish: 100%; African clawed frog: 92%; Mouse: 92%; Rat: 92%

Protein Families: Druggable Genome

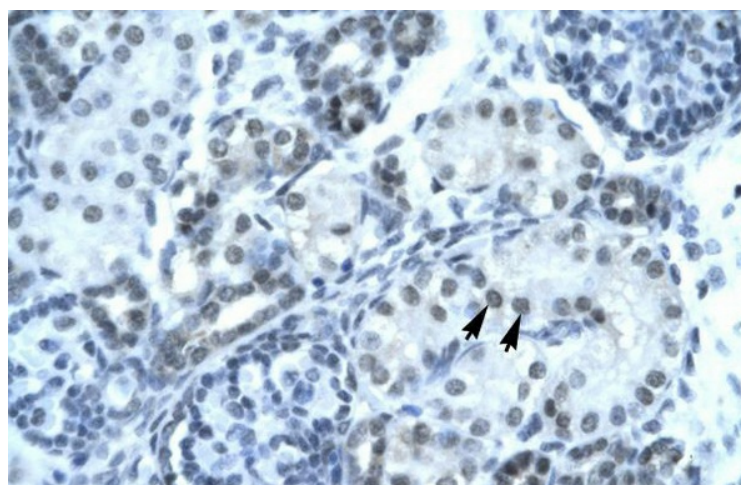
Product images:



WB Suggested Anti-PAX2 Antibody Titration: 1.0ug/ml; ELISA Titer: 1:312500; Positive Control: MCF7 cell lysate



WB Suggested Anti-PAX2 Antibody Titration: 1.0ug/ml; ELISA Titer: 1:312500; Positive Control: Fetal Kidney



Rabbit Anti-PAX2 Antibody; Paraffin Embedded Tissue: Human Kidney; Cellular Data: Epithelial cells of renal tubule; Antibody Concentration: 4.0-8.0 ug/ml; Magnification: 400X